

The Hella logo is positioned in the top right corner. It features the word "HELLA" in a bold, black, sans-serif font. The letter "E" is stylized with three horizontal bars in orange, red, and blue. The background of the entire page is a composite image. The top half shows a close-up of a dark grey or black architectural element, possibly a window frame or a part of a car's body, with a metallic finish. The bottom half is a landscape photograph of a body of water under a hazy sky, with a small boat visible in the distance. A large, semi-transparent orange triangle is overlaid on the right side of the image, pointing towards the bottom right corner.

HELLA

PROTECTION AND SHADE

Terrace & Garden

CONTENTS

Terrace roofing 4

Overview
VENTUR
VENTUR FREE
SINTESI
SINTESI FREE
ELEGANZA
Quality in the details

Over-glass and under-glass awnings 24

SOLANYA
SOLEYA

Awnings 30

Overview
PAN 7040
C2
CLEO 7040
CLEO 7030 | 5530
VIVA 7040
AREIA 7040 | 6030
Quality in the details
ELEGANZA
Wind and sight screens

Smart Home System 54

ONYX

The world of HELLA 60

Premium quality for generations
Sustainability at HELLA
From a single source



TERRACE ROOFING



PERFECTLY COVERED

Due to its robustness and weather resistance, adding a roof to your terrace is the perfect alternative to umbrellas and awnings. The VENTUR slat roof, SINTESI pergola and ELEGANZA pergola awning are not only elegant shade providers, they also protect against rain and, depending

on the configuration, wind. The VENTUR and SINTESI models provide optimal roof options suited to your needs and are available in different sizes. VENTUR SIDE and TERRA SIDE vertical screens offer protection from the wind and prying eyes.



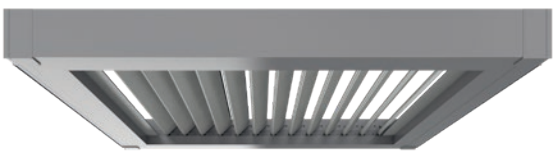
VENTUR

The slat roof with movable aluminium slats, bioclimatic effect and optional vertical blind VENTUR SIDE.



ELEGANZA

The simple pergola awning with a folding roof and optional Varioplus roller blind.



VENTUR FREE

The slat roof without columns, which can be integrated onto or into existing structures or can be mounted between two walls.



SINTESI

The innovative pergola with a folding roof and optional vertical TERRA SIDE blind.



SINTESI FREE

This is the ideal solution for existing structures. Due to the small space required for the fabric's drive mechanism, it is easily added to existing structures.



VENTUR

Bioclimatic slat roof

VENTUR is the flat, bioclimatic slat roof with adjustable aluminium slats. When closed, the slats provide optimal protection from rain. When the roof is opened, in addition to the shade, a cooling draught is created. This way, the terrace becomes an oasis of well-being even on hot summer days. Optional dimmable LEDs provide pleasant mood lighting in the evening hours. VENTUR SIDE vertical shading offers protection from wind and prying eyes.



Variable water drains.



LEDs in the frame light up the space underneath the slat roof with pleasant mood lighting.



Certified systematic.

Max. dimensions [mm]	
max. width	4500
max. projection	6000

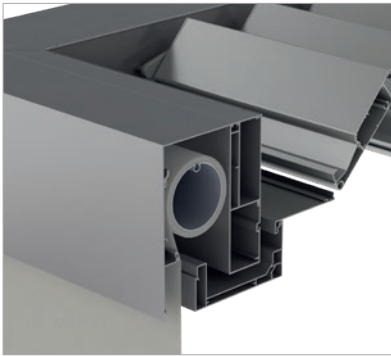


VENTUR SIDE

Optional vertical blind

VENTUR SIDE has a side seam-guided cover for increased wind stability. It can be perfectly integrated into the VENTUR slat roof – without a visible box. The vertical shading is straight, can resist winds up to Beaufort force 6 and boasts uncompromising functionality. VENTUR SIDE was specially developed for vertical shading without compromising the appearance of the structure.

Max. dimensions [mm]	
max. width	6000
max. height	3000



Perfect integration of the roller tube into the structure of the VENTUR and can be retrofitted at any time.



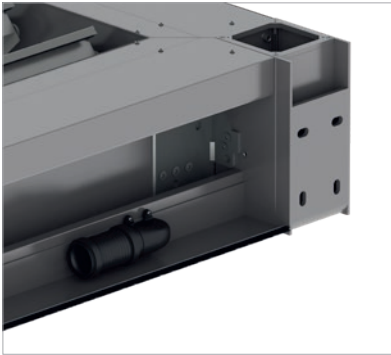
Gap-free cover guidance and high wind stability.

VENTUR FREE

Reaching for the sky

VENTUR FREE is a slat roof without columns, which can be integrated onto or into existing structures or mounted between two walls. To regulate the sunlight as needed, the extruded aluminium slats can be adjusted from horizontal to 120°. Larger dimensions are possible by combining with additional modules. Water flows over the slats into a rain gutter for connection on site.

Max. dimensions [mm]	
max. width	4500
max. projection	6000



Drainage via standard HT50 pipe connection along the wall, for flexible positioning of the drainage at the on-site connection.



LEDs in the frame light up the space underneath the slat roof with pleasant mood lighting.



SINTESI

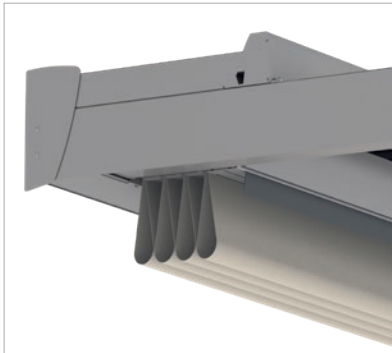
Innovative pergola

The SINTESI pergola is an innovative model with precise and reliable guiding of the cover. When it is extended, its strength lies in the combination of the lightweight design and the outstanding properties of the cover. Due to the guiding of the cover within the guide rails, the mechanics

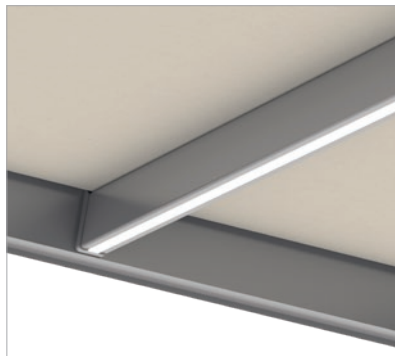
disappear completely into the particularly slim structure. In this way, the water is also drained away via a concealed channel in the column. It is the epitome of aesthetics and practicality: the retracted cover requires around 20 per cent less space than traditional constructions.



When retracted, the rain shelter provides perfect protection against the weather.
Standard: aluminium roof, optional: PVC roof.



Due to the special guidance of the cover profiles, the entire cover and mechanism requires 20 per cent less space than conventional systems.



LEDs in the cover profiles light up the space underneath the pergola with pleasant mood lighting.

Min./max. dimensions	
max. width [mm]*	6000
max. projection [mm]	6500
min. inclination angle**	7°

* With widths up to 5500 millimetres, the maximum projection is 6500 millimetres.
With a width of 5500 millimetres and over, the maximum projection is 5110 millimetres.

** Equivalent to the absolute minimum inclination angle.
Depending on the width and the sloping projection, the minimum inclination angle may be higher.
(see price list)



TERRA SIDE

Vertical shade

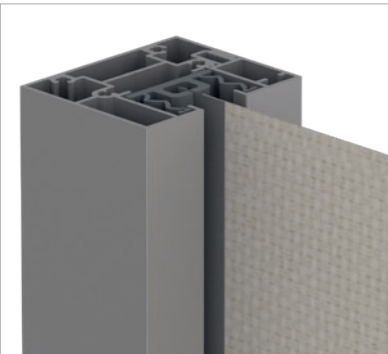
This vertical blind is designed to close off the side or front of pergolas, providing additional protection from sunlight as well as prying eyes. It is also perfectly suitable for incorporating into loggias, balconies or existing wall openings. The fabrics for the TERRA SIDE are available in various designs.

Box 115

Max. dimensions [mm]	
max. width	4500
max. height	2500

Box 130

Max. dimensions [mm]	
max. width	6000
max. height	3000



Gap-free cover guidance and high wind stability.

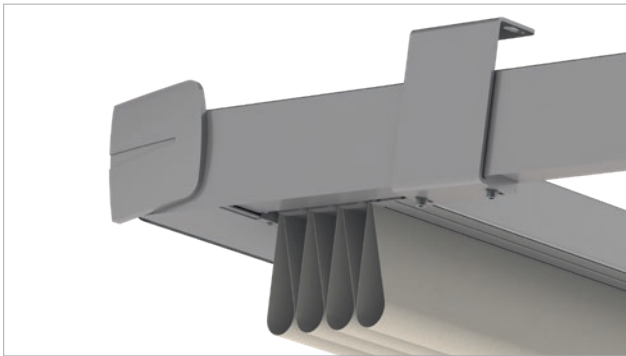
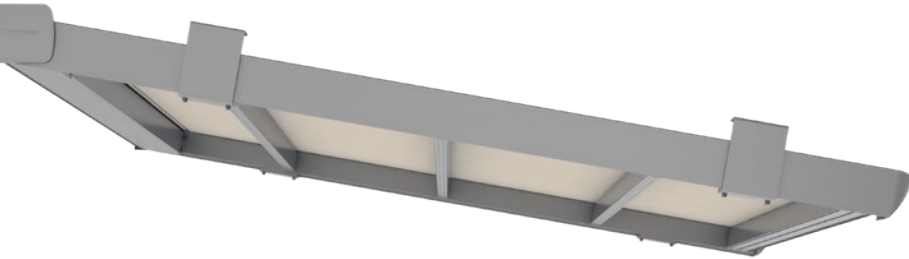


Easy to fit, and can also be retrofitted to the SINTESI.

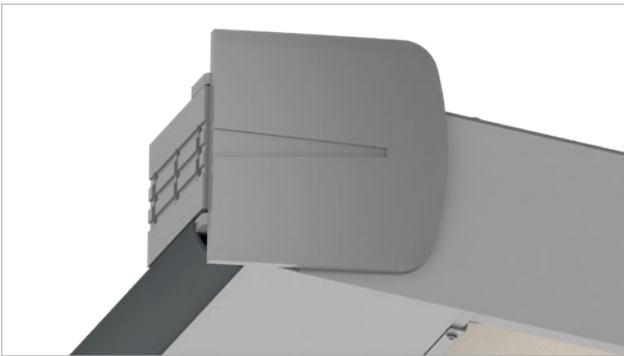
SINTESI FREE

Durable and versatile

SINTESI FREE is the ideal solution for existing structures. Due to the small space required for the fabric's drive mechanism, it is perfect for adding into existing structures. This means it can be integrated easily from wall to wall in inner courtyards or in existing timber constructions.



Straight design with hidden screw connections.



Connection profile for the perfect connection to the wall.

Min./max. dimensions	
max. width [mm]*	6000
max. projection [mm]	6500
min. inclination angle**	7°

* With widths up to 5500 millimetres, the maximum projection is 6500 millimetres. For widths of 5500 millimetres and over, the maximum projection is 5110 millimetres.

** Equals the absolute minimum inclination angle. Depending on the width and the sloping projection, the minimum inclination angle may be higher. (see price list)





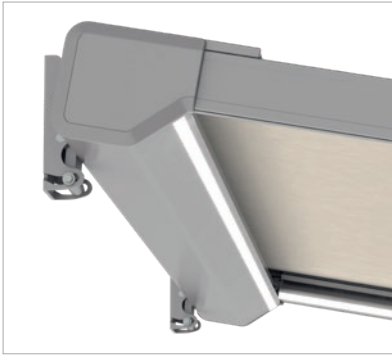
ELEGANZA

Elegant pergola awning

As sturdy as a pergola, as slim and elegant as an awning. The ELEGANZA pergola awning is easy to mount on walls, ceilings or rafters. In the protect version, the fabric is guided without gaps along the sides in a special profile for increased wind stability. If desired, inconspicuous LED strips can be integrated into the profiles to provide atmospheric, indirect light. A motorised Varioplus roller blind can also be installed between the rigid columns for vertical shading.



Rail-guided Varioplus roller blind with anti-swing device.



LED strip in cassette and guide rails.



Optional gap-free cover guide for wind resistance class 3.

Max. dimensions	ELEGANZA	ELEGANZA protect
max. width [mm]	6000	6000
max. projection [mm]	5500	5500
max. surface [m²]	30	26

QUALITY IN THE DETAILS

Technical highlights and equipment



LED light fitting

The LEDs add mood lighting where it is needed: in the space under the terrace roofing.



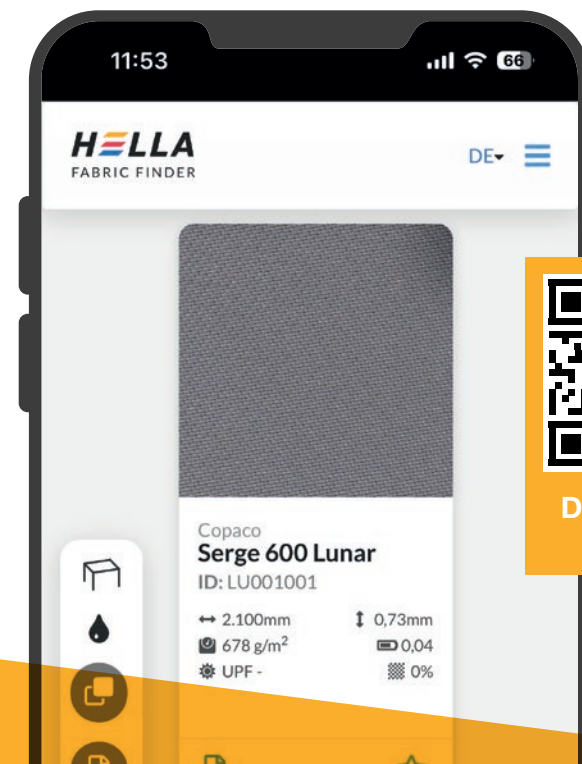
Water drainage

In the VENTUR and SINTESI models, water drainage is concealed in the column.



Radiant heater

Infrared radiant heaters turn terraces into oases of well-being even on cool evenings. Available as a ceiling-mounted version for VENTUR and a wall-mounted version for ELEGANZA and SINTESI.



DISCOVER NOW

FABRIC FINDER

How to find the right fabric

The latest generation of functional textiles provide shade, reflect the sun's rays, are weatherproof, tear-resistant and permeable to air. The FABRIC FINDER from HELLA leads you to the right fabric in just a few clicks.

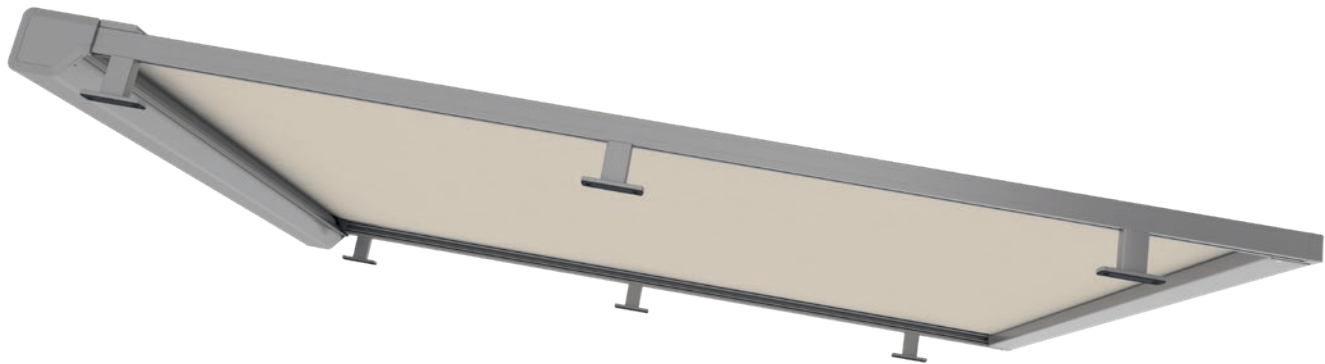
A close-up photograph of a window frame and a yellow awning. The window frame is white and has a small 'WELLA' logo on it. The awning is yellow with black horizontal stripes. The background is a bright, overcast sky.

OVER-GLASS AND UNDER-GLASS AWNINGS

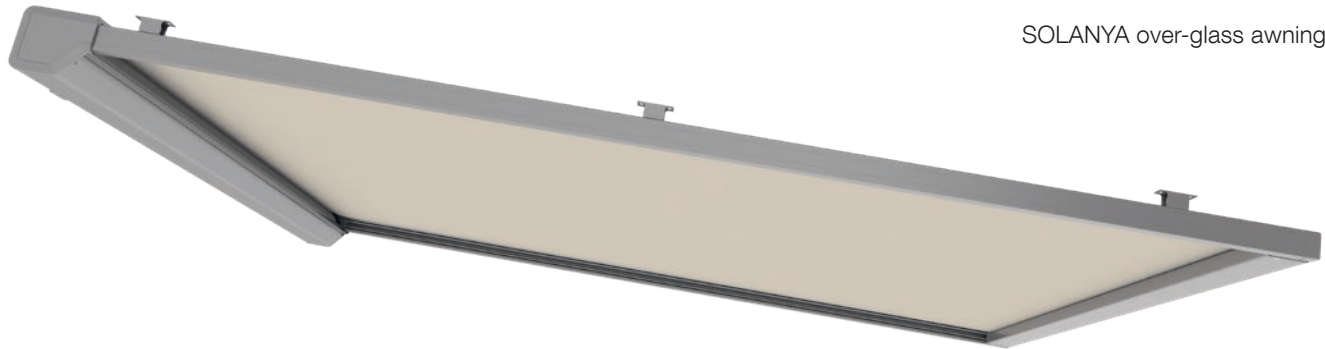
SOLANYA

Mediterranean lightness

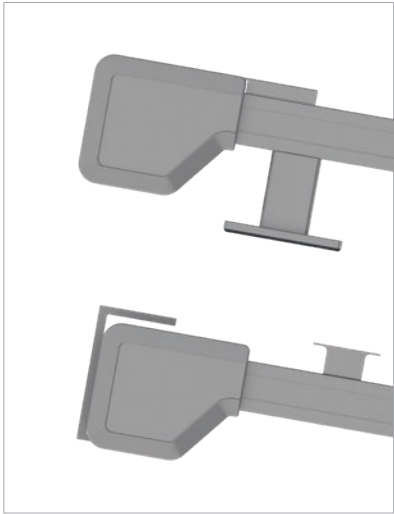
SOLANYA is the perfect awning for shading glass roofs. It can be mounted over or under the glass roof and blends inconspicuously into the overall appearance thanks to the slim-line construction and small box size.



SOLANYA over-glass awning



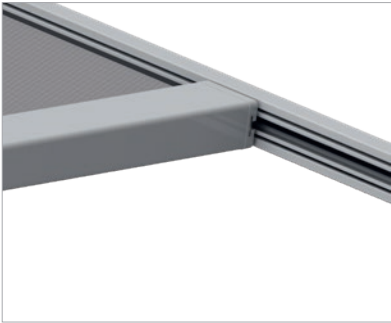
SOLANYA under-glass awning



Small box size, 151×131 mm with intelligent spring mechanism for optimum fabric tensioning.



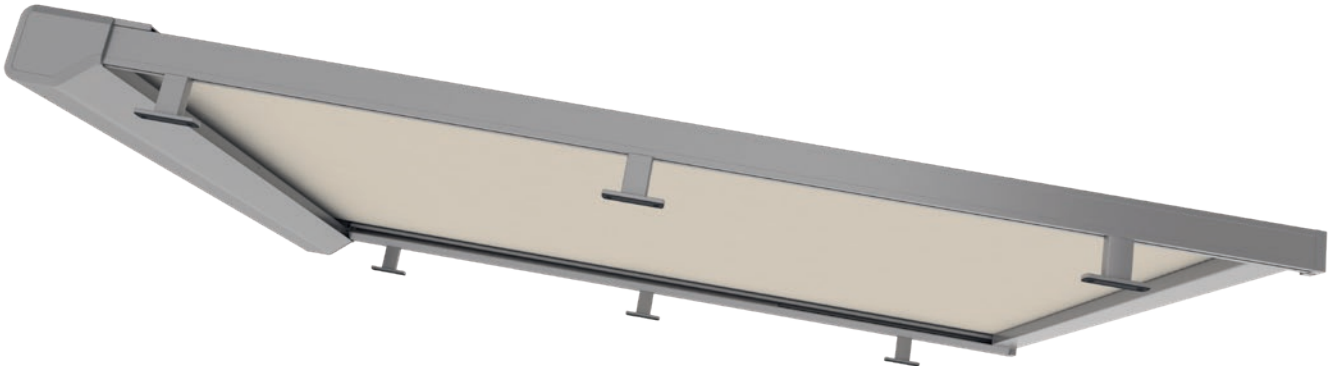
Sturdy mounting brackets with integrated sound insulation and waterproofing.



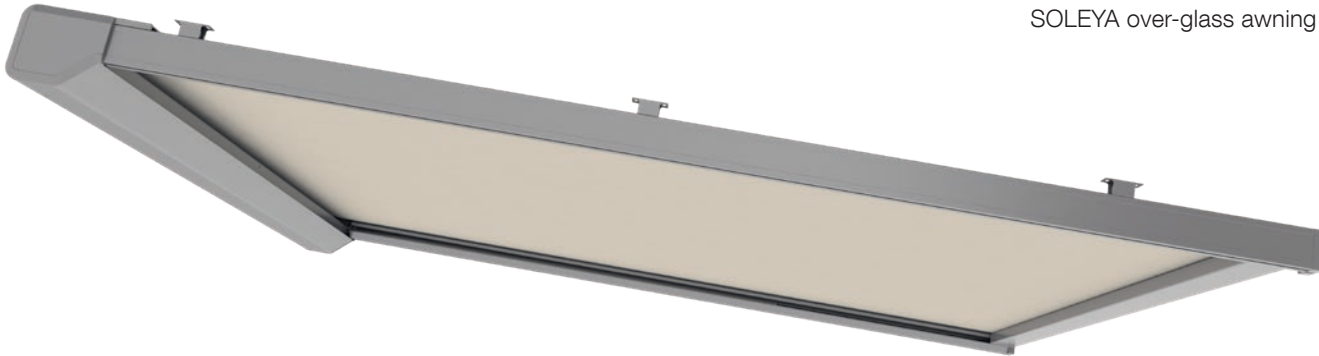
Drop-out profile.



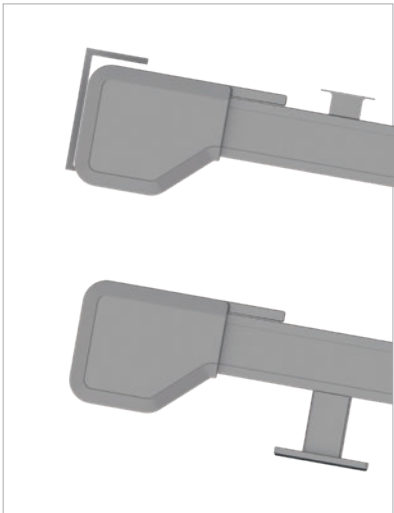
Min./max. dimensions [mm]	SOLANYA
min. width	1420
max. width – single	4500
max. width – coupled	9000
max. projection – single	4500
max. projection – coupled	4500



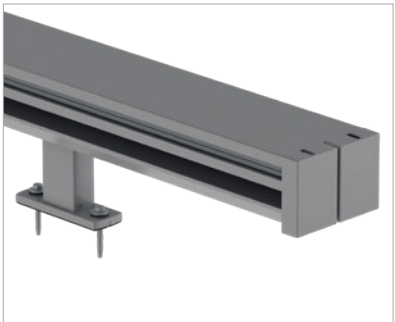
SOLEYA over-glass awning



SOLEYA under-glass awning



Small box size, 253×156 mm with optional LEDs.



Double guide rail for combining units.



Gap-free fabric guide in the protect version.

SOLEYA

The best under the sun

Due to its robust construction, SOLEYA is suitable for shading large glass roofs on terraces with an area of up to 30 square metres. It can be used as an over- or under-glass. With the under-glass version, integrated and dimmable LED strips provide an atmospheric ambience on request. In the protect version, the fabric is guided along the sides, which guarantees a gap-free appearance and high wind stability.

Min./max. dimensions [mm]	SOLEYA	SOLEYA protect
min. width	1420	1420
max. width – single	6000	6000
max. width – coupled	10000	10000
max. projection – single	6500	6000
max. projection – coupled	5000	5000



AWNINGS



VERSATILE AND TIMELESS

Cassette awnings

HELLA cassette awnings are protected from the weather when retracted. With elegant shapes and a wide range of fabrics, the PAN, C2 and CLEO models blend seamlessly into the surrounding architecture. The awnings can be driven by crank or motor and equipped with radio control.



PAN 7040

Cubic design – beautiful lines and uncompromisingly functional.



C2

The modular and modern awning with slimline box.



CLEO 7040, 7030 and 5530

Awning range in the elegant look of an oval cassette.



VIVA 7040

The half-open awning with many functions.



AREIA 7040 and 6030

The open all-round awnings with superior technology.



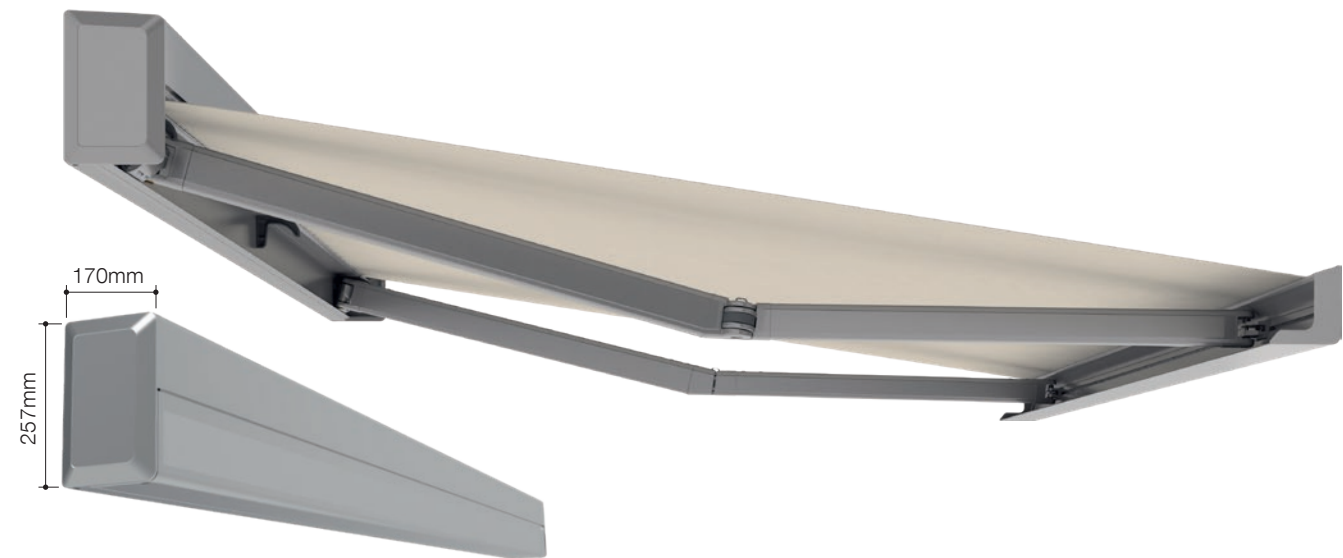
ELEGANZA

The elegant pergola awning with a folding roof and optional Varioplus roller blind.

Open and half-open awnings

The VIVA and AREIA models round off the range. They are used wherever roof overhangs or balconies provide weather protection or only simple cover is required. Like all HELLA awnings, the elegant shades are made to measure and can be driven by crank or motor.

Pergola-awning



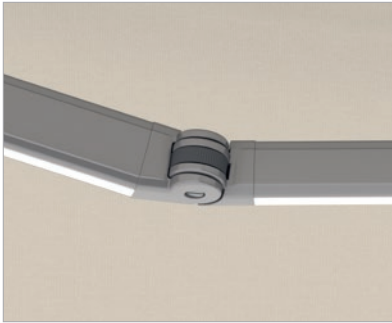
PAN 7040

Sun protection in portrait format

PAN 7040 is an elegant and extravagant awning with a clean-line aesthetic, and is furthermore uncompromisingly functional. It rolls up towards the top and is then completely hidden in a portrait-mounted, plain box. For puristic architecture concepts and people with particular design requirements, the PAN 7040 awning is a custom-made sun and weather protection solution that becomes an atmospheric outdoor light source when it is provided with LED lights integrated flush into the folding arms.



Flush wall mounting without visible brackets.



Folding arm with hidden, high-strength pull tape, optionally available with integrated LED lighting.



Stable connection to the front rail.

Min./max. dimensions with sloping projection [mm]	1500	2000	2500	3000	3500	4000
min. width – single unit	2170	2670	3170	3670	4170	4670
max. width – single unit	7000	7000	7000	7000	7000	7000

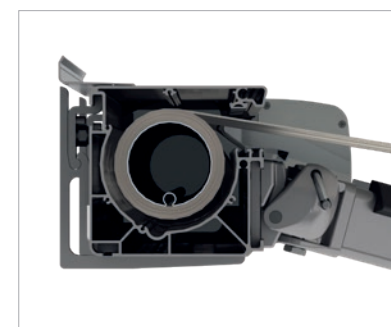




C2

Subtle sun shade

A characteristic feature of this awning is its elegant, slimline box into which the fabric and moving parts disappear completely. The C2 is a powerful sun shade that impresses with its functional and uncompromising modern design. This awning can be coupled with other units in a modular way and is ideally suited to shading large surfaces. If it is equipped with a Varioplus roller blind, it can also vertically define open space and provide protection.



Especially stable cassette awning thanks to one-piece fabric box profile and optimum wall connection.



The tilt joint arm bearing with anti-lift device ensures safe closing and prevents the awning from swinging up in gusts of wind.



The optional Varioplus roller blind elegantly integrated into the drop-out profile adds sun and privacy protection.

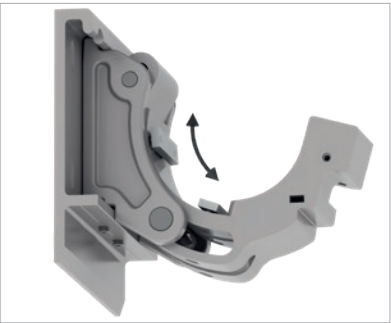
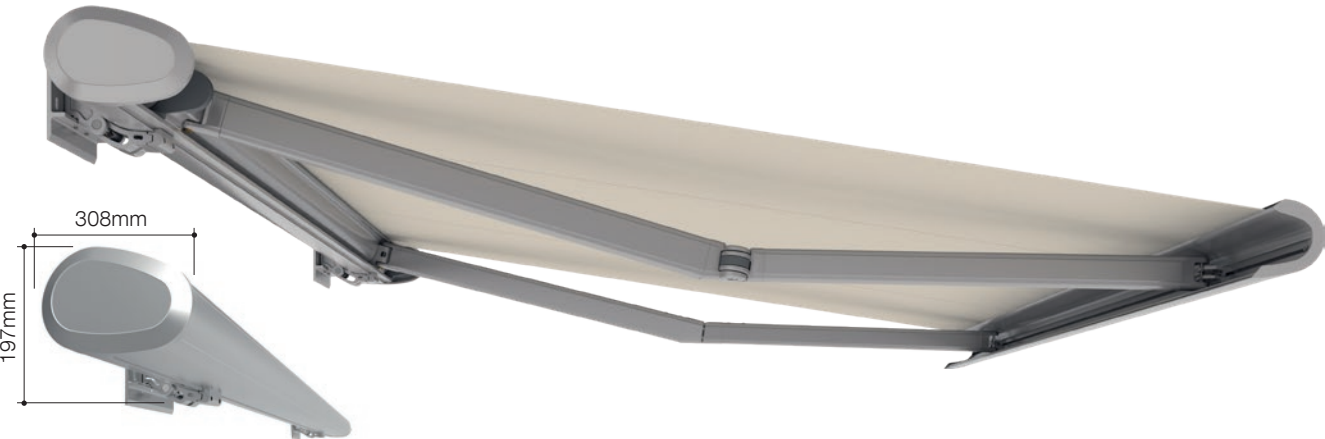
Min./max. dimensions with sloping projection [mm]	1500	2000	2500	3000	3500	4000
min. width – single unit	2000	2500	3000	3500	4000	4500
min. width – coupled	4000	5000	6000	7000	8000	9000
max. width – single unit	7000	7000	7000	7000	7000	7000
max. width – coupled	14000	14000	14000	14000	14000	14000



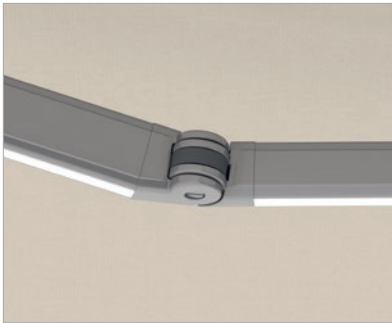
CLEO 7040

Elegant-style shade

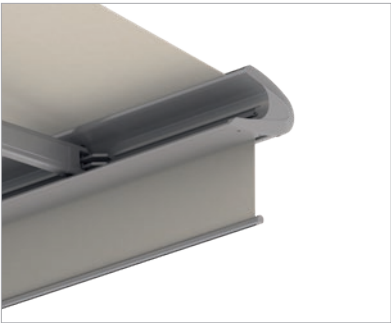
Floating, almost weightless, slim and well-designed – the CLEO 7040 awning is a generous sun shade, but still has an elegant and lightweight appearance. Despite its dimensions, space-saving installation is possible thanks to its oval cassette. The exterior brackets for wall and ceiling installation, as well as the lightweight construction make this awning exceptionally flexible. As an option, the Varioplus roller blind offers additional protection from low sun, wind and prying eyes. For maximum comfort, wind, sun and rain sensors are available too.



Simple tilt adjustment:
5° to 40°.



Folding arm with hidden, high-strength pull tape, optionally available with integrated LED lighting.



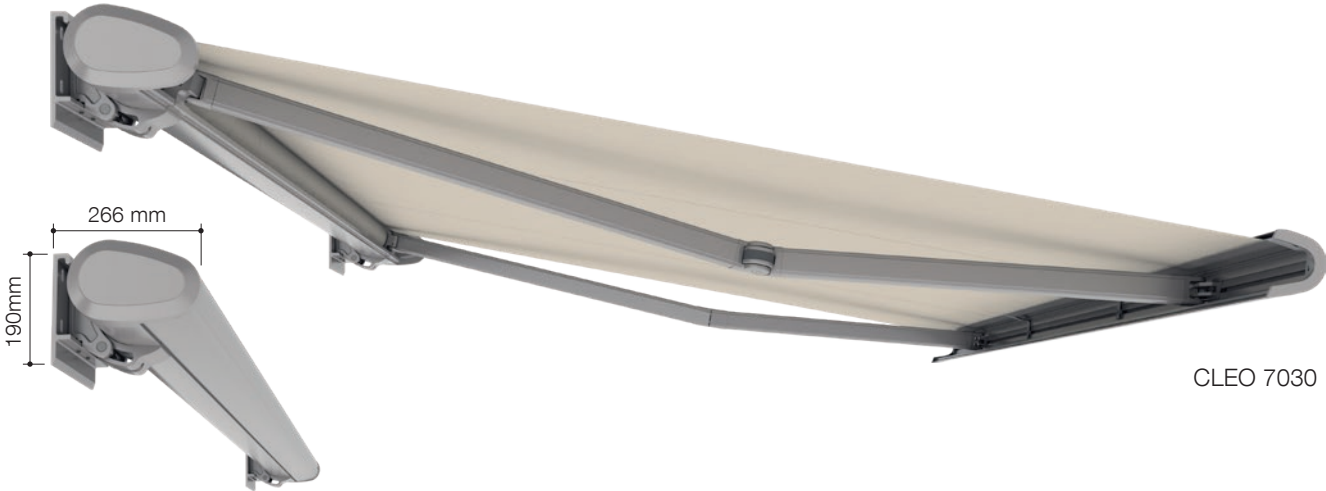
The optional Varioplus roller blind integrated into the drop-out profile of CLEO 7040 adds sun and privacy protection.

Min./max. dimensions with sloping projection [mm]	1500	2000	2500	3000	3500	4000
min. width – single unit	2170	2670	3170	3670	4170	4670
max. width – single unit	7000	7000	7000	7000	7000	7000

CLEO 7030 | 5530

Compact and well-designed

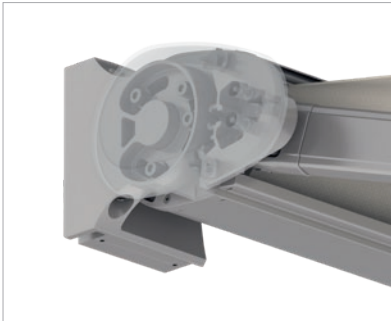
Due to their oval cassettes, the CLEO 7030 and CLEO 5530 cassette awnings can be installed in a space-saving and flexible manner. The many installation options of the CLEO 7030 make it extremely flexible, so that it adapts perfectly to any architecture. The inclination angle of the CLEO 5530 can be adjusted up to 65 degrees if mounted on the wall and up to 80 degrees if mounted on the ceiling. Exterior brackets for wall and ceiling installation and the lightweight construction make this awning exceptionally versatile. For maximum comfort, wind, sun and rain sensors are also available in both variants.



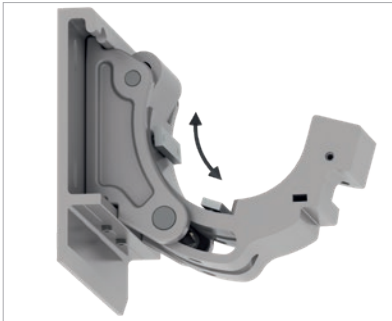
CLEO 7030



CLEO 5530



Large tilt range of the CLEO 5530 with motor drive: Wall mounting (5° to 65°), Ceiling mounting (5° to 80°).



Simple tilt adjustment of the CLEO 7030: 5° to 45°.



Visually reduced, stable folding arm with hidden high-strength pull tape.

CLEO 7030	Min./max. dimensions with sloping projection [mm]	1500	2000	2500	3000
	min. width – single unit	2100	2600	3100	3600
	max. width – single unit	7000	7000	7000	7000
CLEO 5530	Min./max. dimensions with sloping projection [mm]	1500	2000	2500	3000
	min. width – single unit	1930	2430	2930	3430
	max. width – single unit	5500	5500	5500	5500



VIVA 7040 retracted,
with profile to cover the arm.



VIVA 7040 retracted,
with valance.



VIVA 7040
Open version,
without roof and fabric shell profile.



VIVA 7040
Version with roof profile.



VIVA 7040
Version with roof and
fabric shell profile.

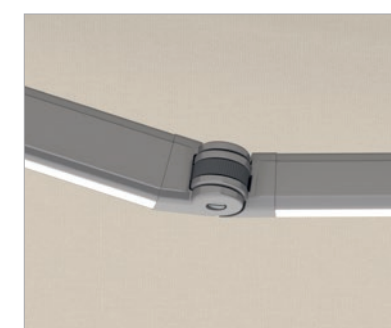
VIVA 7040

Design your outdoor space

The VIVA 7040 awning adapts to any architecture and provides many extras. It is available with or without a roof profile, and with the optional fabric shell profile it offers additional protection for the awning cover. With crank (Variomatic) or motor (Variotronic), the angle of inclination of the awning can be adjusted comfortably, especially during low sun elevation in the afternoon.



The optional Varioplus roller blind
elegantly integrated into the drop-out
profile adds sun and privacy protection.



The articulated arm with concealed,
high-strength pull cord and LED
strips optimally illuminates the space
under the awning.



The angle of inclination of the VIVA
7040 awning is optionally adjustable
by means of a motor (Variotronic)
or crank (Variomatic).

Min./max. dimensions with sloping projection [mm]	1500	2000	2500	3000	3500	4000
design maxima	1490	1740	1990	2240	2490	2740
min. width – single unit	1980	2480	2980	3480	3980	4670
min. width – coupled	4040	5040	6040	7040	8040	9340
max. width – single unit	7000	7000	7000	7000	7000	7000
max. width – coupled	14000	14000	14000	14000	14000	14000

AREIA 7040 | 6030

Versatile basic model

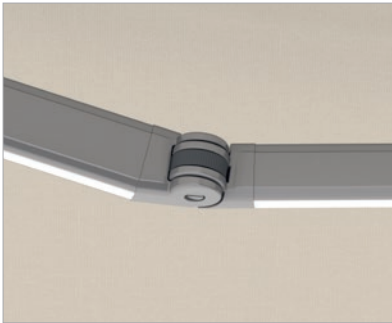
The AREIA all-round awning scores highly thanks to its solid technology. The details are elegantly designed, from the fabric and arm bearing to the folding arms. The profile is narrow, the angle of inclination adjustable and the stability enormous.

The AREIA 7040 model can be coupled on request, can be equipped with LED lighting and protects against low sun and unwanted attention with the optional Varioplus roller blind.

AREIA 6030 is available as a basic model with valance only and in the three colors white aluminium (RAL 9006), traffic white (RAL 9016) and anthracite grey (RAL 7016). AREIA 6030 is a quality awning with a convincing price-performance ratio.



Harmonious design with continuous contours.



Articulated arm with concealed, high-strength pull cord, optional integrated LED lighting for the AREIA 7040.



The optional Varioplus roller blind integrated into the drop-out profile of the AREIA 7040 adds sun and privacy protection.

AREIA 7040	Min./max. dimensions with sloping projection [mm]	1500	2000	2500	3000	3500	4000
	min. width – single unit	2080	2580	3080	3580	4160	4660
	min. width – coupled	4120	5120	6120	7120	8280	9280
	max. width – single unit	7000	7000	7000	7000	7000	7000
	max. width – coupled	14000	14000	14000	14000	14000	14000

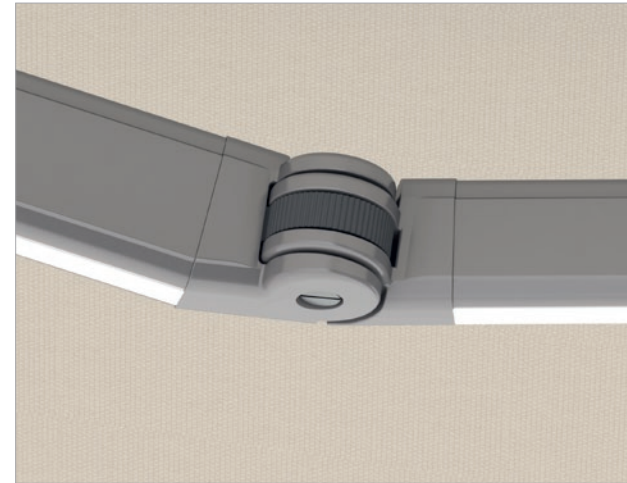
AREIA 6030	Min./max. dimensions with sloping projection [mm]	1500	2000	2500	3000	3500	4000
	min. width – Motor	2070	2470	2990	3470	-	-
	max. width – single unit	6000	6000	6000	6000	-	-



QUALITY IN THE DETAILS

Technical highlights

- drop-forged aluminium for highly loaded joints
- high-tech pull cords or chains for the awning arms
- internal springs with noise damping
- stainless steel screws in Teflon bushes
- galvanised and powder-coated steel components
- profiles made of extruded aluminium



Especially stable

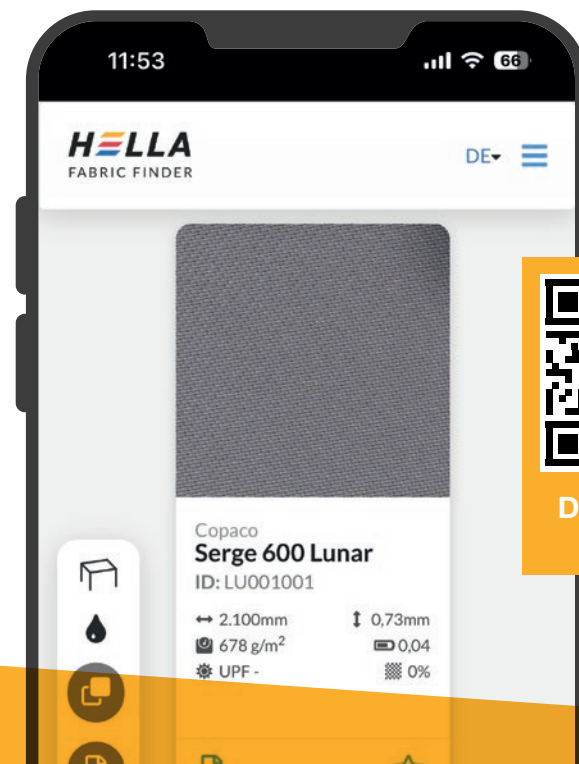
HELLA awnings appear light and floating, almost as if they were weightless. Nevertheless they are considered to be one of the most stable solutions on the market. Slim, well-designed constructions that can be installed in a space-saving and flexible way hide the latest technology.

The hidden high-strength pull cable transfers the spring force to the folding arm and awning cover by means of noise-insulated special springs. Its high resistance to abrasion, moisture, UV rays and chemicals makes the pull cord particularly durable.

Well considered and convenient

With many good ideas and convenient solutions, HELLA awnings make you want to enjoy life outdoors:

- LED lighting that is artfully integrated into the folding arm
- automatic wind, sun and rain warning devices that independently retract the cover
- heater modules for the in-between season
- a roller blind that offers vertical visual cover and sun protection



DISCOVER NOW

FABRIC FINDER

How to find the right fabric

The latest generation of functional textiles provide shade, reflect the sun's rays, are weatherproof, tear-resistant and permeable to air. The FABRIC FINDER from HELLA leads you to the right fabric in just a few clicks.



LED light fitting

LED lighting is available for the AREIA 7040, VIVA 7040, CLEO 7040 and PAN 7040 awnings as additional equipment. Durable, energy-saving and dimmable, the warm white mood lighting illuminates the space under the awning and can be conveniently controlled by radio. The LED strips are integrated on the underside of the folding arms, and the cables are stowed away neatly and concealed in the construction of the awning.

Equipment



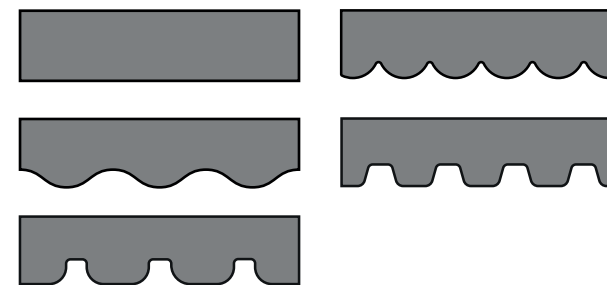
Varioplus roller shutter

Integrated into the drop-out profile, the roller blind offers additional sun and privacy protection and, depending on the awning, drive and fabric selection, it can be lowered up to 2500 millimetres.
Available for AREIA 7040, CLEO 7040, VIVA 7040 and C2.



Coupling

HELLA awnings can be coupled to obtain larger complete widths.
Available for AREIA 7040, VIVA 7040 and C2.



Valance

Individual valance shapes and bordering strips matching the awning cover.



Radiant heater

Infrared radiant heaters turn terraces into oases of well-being even on cool evenings.



ELEGANZA

Elegant pergola awning

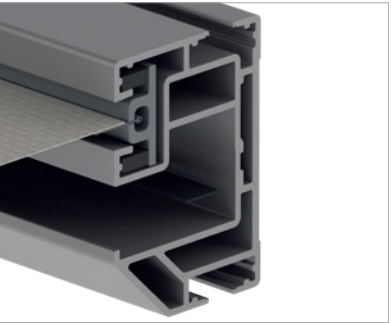
As sturdy as a pergola, as slim and elegant as an awning. The ELEGANZA pergola awning is easy to mount on walls, ceilings or rafters. In the protect version, the fabric is guided without gaps along the sides in a special profile for increased wind stability. If desired, inconspicuous LED strips in the profiles provide atmospheric, indirect light. A motorised Varioplus roller blind can also be installed between the rigid columns for vertical shading.



Rail-guided Varioplus roller blind with anti-swing device.



LED lighting in cassette and guide rails.



Optional gap-free cover guide for wind resistance class 3.

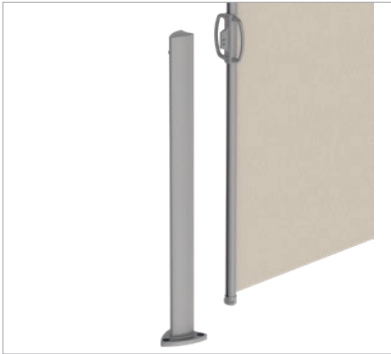
Min./max. dimensions	ELEGANZA	ELEGANZA protect
max. width [mm]	6000	6000
max. projection [mm]	5500	5500
max. surface area [m²]	30	26



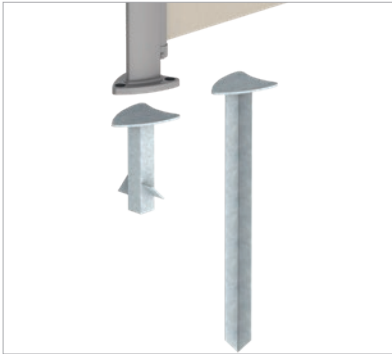
WIND AND SIGHT SCREENS

Well protected from the wind and prying eyes

The wind and sight screens from HELLA score highly in terms of both function and design. They are available in two heights and two frame colors, and can be fitted with various awning fabrics made of acrylic and polyester.



Standalone with column.



Simple assembly of the column with floor bracket for setting in concrete or hammering in.



Secure locking.

Min./max. dimensions [mm]	
max. width – single unit	1900
max. projection – single unit	4000



SMART HOME SYSTEM



DISCOVER ONYX
NOW

ONYX

The Smart Home System from HELLA

With ONYX, HELLA offers a smart home system that handles the digital operation of sun protection systems and controls energy input in buildings of any size. Sun protection solutions can be conveniently controlled via smartphone or tablet using an app, voice control or fully automatically.

By integrating sun protection products into the smart home, there is enormous potential for them to have a positive impact on a building's energy footprint. Maximum comfort, energy savings and sustainability can be achieved by networking with other building control systems such as those for heating or ventilation.



For a smart home

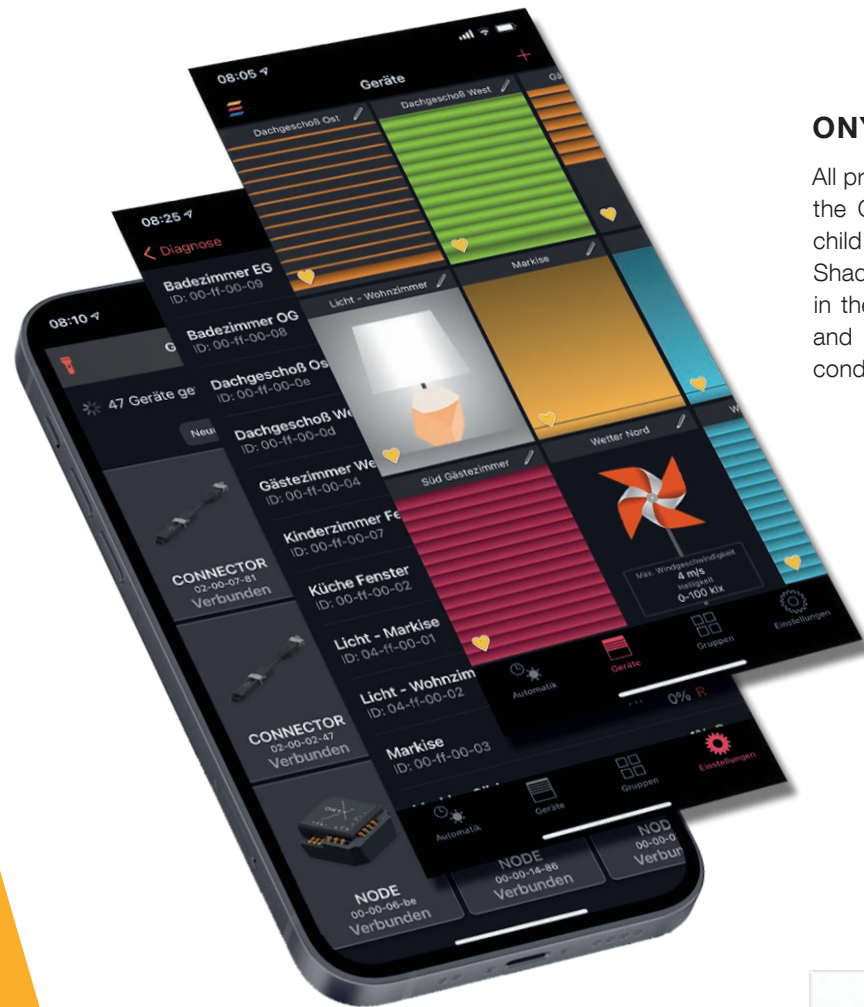
Be smart when playing with the sun! Be it a room flooded with light in winter or a shaded terrace on a hot summer's day – with the ONYX.HOME control system, it has never been easier to control the daylight and make optimum use of it within your own four walls. Digitally, automatically and in real time!



Control system for offices, etc.

Whether it's an apartment building or a large office complex – ONYX.PRO from HELLA has the energy balance for buildings of any size under control. ONYX.PRO provides a uniform façade appearance and protects the sunshade from the influence of the weather. In coordination with the electrical engineer, HELLA takes over the pre-configuration and commissioning of the sun protection systems. More sun protection – less air conditioning!

The components



ONYX app

All products at a glance on your smartphone! With the ONYX app, controlling the sun protection is child's play – whether you're at home or on the go. Shading devices can be controlled and configured in the app using individually adjustable scenarios and programmes based on the current weather conditions.

ONYX.CENTER

The centre box is the interface between the smartphone and the individual control units. It enables wireless, encrypted communication in both directions to capture the current position of the sun protection in real time and display it in the app.



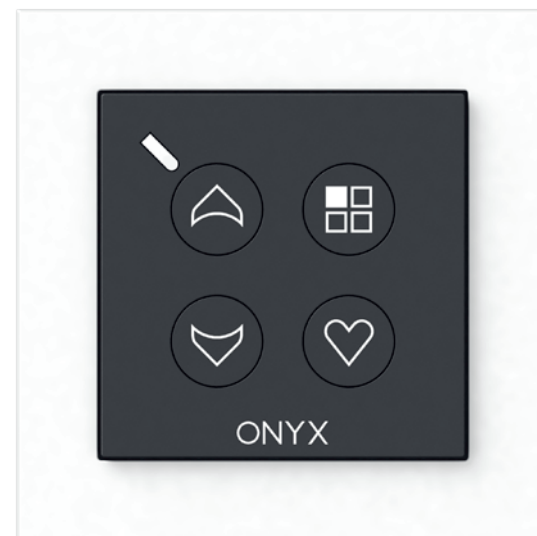
ONYX.WEATHER

The wind and sun sensor captures weather factors such as temperature, solar irradiation and wind force right on the façade.



ONYX.CLICK

The sun protection products are very easy to operate using the hand-held radio transmitter ONYX.CLICK and the wall-mounted radio transmitter ONYX.SWITCH. Several shading devices can be combined and grouped into five channels. Different colors indicate which product is being controlled. The wall-mounted and hand-held radio transmitters can be used independently or as an extension of the centre box. The wall-mounted radio transmitter ONYX.SWITCH is available with or without a frame and is compatible with all common standard switch designs.



ONYX.SWITCH



ONYX.TAG wind

The wind sensor measures the vibrations on the awning so as to retract it automatically if certain threshold values are exceeded.



ONYX.TAG sun

The sun and brightness sensor continuously measures the current brightness and controls shading systems fully automatically. The sensor provides the ideal glare and heat protection for indoor and outdoor use.



ONYX.TAG temperature

The temperature and humidity sensor monitors the temperature indoors and frost outdoors, and controls the sun protection according to set values.



THE WORLD OF HELLA



The HELLA headquarters and plant in Abfaltersbach, East Tyrol

Alois Kraler
Founder of HELLA

PREMIUM QUALITY FOR GENERATIONS

HELLA was founded in 1959 in Abfaltersbach, Austria. Since then, the company has been in the hands of the Kraler family and from a small family business in the East Tyrolean mountains it has become one of the leading companies in sun and weather protection technology. As one of the few full service providers in the market, HELLA attaches great importance to everything being produced in-house. Technology, production, consulting and also installation if required – premium quality is the benchmark here. All products are manufactured individually to measure, and the in-built components are designed for robustness and long service life.

A look at the whole room

Venetian blinds, roller shutters, awnings or pergolas – sun protection systems from HELLA are more than just smart shade providers. The intelligent systems play with light and shade and create individual spatial experiences. With the products made by this premium provider from Austria, you can control your personalised daylight profile in all internal and external spaces. Over and above that, the shading systems from HELLA also help in reducing energy consumption when equipped with weather sensors.

SUSTAINABILITY AT HELLA

For HELLA, sustainability is more than just a buzzword – it's a commitment to a holistic attitude and has been practised by the owners for decades.

Consistently acting in a sustainable way means acting in a manner that is environmentally friendly, economical and socially sustainable. The company maintains long-term relationships with customers, suppliers and employees and continuously minimises the environmental footprint of its products. Thus, for example, the slatted hinges of the outdoor blinds have recycled aluminium content of 80 per cent. HELLA is just as sustainable as its products: the company produces more energy at its headquarters than is consumed thanks to its own hydroelectric power plant and participation in a biomass heating plant. The energy management principle "Saving, generating and stocking energy" defined at the company headquarters is constantly being extended to further business locations.

HELLA's contribution to climate protection

The most sustainable solution for a comfortable indoor climate and protecting against the summer heat is automated outdoor shading. The main function of external sun protection is to reflect the sun and ensure that the heat does not penetrate into the interior. With the ONYX control system developed by HELLA, which can be connected to all common smart home systems, the sun protection systems become even more sustainable and allow the sun to get in only where it is wanted.

The system can also react to the weather in order to optimally adapt the sun and heat protection to the conditions. The ONYX weather sensors detect influences such as wind speed, sun intensity and temperature on the façade. The obtained data can then be used to customise the products to residents' needs.

Smart networking is the future

By integrating sun protection products into the smart home, they also have enormous potential to have a positive impact on a building's energy footprint. Maximum comfort, energy savings and sustainability can be achieved by networking with other building control systems such as those for heating or ventilation. The ONYX control system is interface-compatible with international systems such as Alexa or Google Home and connects to all other types of building services. Smart home integration focuses on residents and their use of space, including their daily routine and preferences.

Energy saving with sun protection

Depending on the building, age and size of the window area, up to 30 per cent of heating energy can be saved using automated, external sun protection, like roller shutters. Savings of up to 50 per cent can also be achieved when cooling. Sun protection products have a clear advantage over air conditioning systems when it comes to sustainability. The latter not only consume energy, but also directly contribute to warming the urban space through warm exhaust air. Intelligent sun protection systems thus make an important contribution to CO₂ savings and climate protection.

EVERYTHING FROM A SINGLE SOURCE

Thanks to its innovative strength, HELLA is a full service provider and offers a broad portfolio of customised sun protection solutions. Premium quality is the benchmark here. Be it refitting, refurbishment or new construction – HELLA has the right solution for every building project!

Terrace & Garden



Window & Façade



Build & Renovate



Control devices



