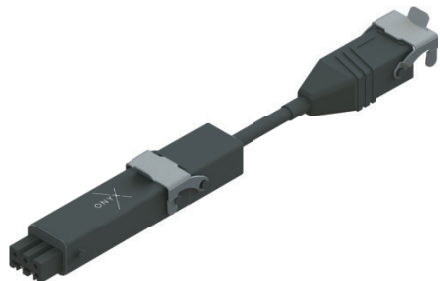




**These instructions must be read  
prior to installation  
and use!**



# HELLA

Adapter plug ONYX.CONNECTOR



Installation instructions



Operating guidelines

## Preliminary remarks HELLA Adapter plug ONYX.CONNECTOR

With this HELLA product you have opted for a high-quality product with a most up-to-date technology that can nevertheless be easily installed and operated. In these instructions we describe the basic installation, commissioning and use.



These instructions are addressed to trained electricians.

The following symbols will assist you with the installation or use and require a safety-conscious conduct:



### Attention!

This symbol indicates instructions that, if disregarded, can put the user in danger.



### Attention!

This symbol indicates instructions that, if disregarded, can potentially result in damage to the product.



This symbol indicates instructions for use or helpful information.



This symbol requires you to act.



### Attention!

This symbol indicates a risk of injury or danger to life due to an electric shock.



This symbol indicates parts of the product, for which you will find important information in these installation instructions.

## Table of Contents

Preliminary remarks HELLA Adapter plug ONYX.CONNECTOR .....	1
General notes .....	2
Safety instructions .....	3
Designated use .....	4
Scope of delivery .....	5
Device description .....	5
Technical data .....	6
Installation .....	6
Connection diagram .....	7
Configuration .....	10
Operating guidelines .....	10
Settings .....	11
Ideal use of the radio signal .....	13
Fault removal .....	13
Disposal .....	15

## General notes

### Questions

In case of questions concerning the installation or the use of your product, please consult your authorized specialist shop.

### Warranty

Warranty claims are subject to statutory limitation periods. Wear parts are excluded from the warranty; the same applies for changes in colour and changes in characteristics caused by UV radiation.

### Liability

In case of non-observance of the directions and information given in these instructions and in case of improper operation or unintended use, the manufacturer shall not accept any warranty claims concerning any damage to the product. In these cases the liability for consequential damage to any parts or persons is ruled out as well.

### Legal notes

The graphs and texts of these instructions were carefully prepared. We cannot be held liable for any errors and their potential consequences! Subject to technical modifications to the product and to these instructions! These instructions include copyrighted information. All rights reserved! The listed product or brand names are trademarks of the respective owners.

### EC declaration of conformity

The HELLA Sonnen- und Wetterschutztechnik GmbH hereby declares that this product complies with the basic requirements and the other applicable regulations of the EC directives. The complete declaration of conformity can be found in the download area of our website <https://www.hella.info>.

## Safety instructions



These installation instructions refer to prefabricated elements, that (1) for 100% are made from parts, which are defined by us, and (2) which are made in manufacturing processes, which are defined by us too; in all other cases we do not provide any guarantee!

The safety instructions as well as the appropriate instructions must be read carefully before installation and use. In case of non-observance of the directions and information given in these instructions and in case of improper installation and operation or unintended use, the manufacturer shall not accept any warranty claims concerning any damage to the product. In these cases the liability for consequential damage to any parts or persons is ruled out as well.



- Follow the described installation steps and pay attention to recommendations and notes.
- Keep these instructions in a safe place.
- All installation and removal works, as well as maintenance and repair works are only allowed to be carried out by authorised and qualified specialist staff.
- Observe the regulations for prevention of accidents of the employer's liability insurance association!
- Before operation check the unit for visible damage. If the unit is damaged, it should not be used; please consult authorized specialist staff immediately.
- Only use unmodified original parts from HELLA.
- In case of unauthorised opening of the device, improper use, incorrect installation or incorrect operation, there is a risk of damage to persons or property.
- Never let children play with the unit.



In the outdoor area the ONYX.CONNECTOR must be protected against the weather at its place of installation.

Subject to technical modifications – Date of Issue May/2020

3

## Safety instructions



### Attention! Risk of injury or danger to life due to an electric shock!

- Set-up, examination, commissioning and error correction of the unit must only be performed by authorised or trained expert staff (as per VDE 0100).
- Switch off the current to the connecting lines when working at the unit. There is danger to life! Take safety precautions against unintentional switching on!
- Check the electrical wires regularly for damage. Do not use the unit if any damage is found.



### Observance of regulations and rules

The building owner is responsible for the observance of statutory rules and country-specific provisions on site.

## Designated use

The radio receiver ONYX.CONNECTOR may only be used for the control of outdoor blinds / exterior Venetian blinds, roller shutters, awnings and facade blinds that are provided with drives that are intended for this use. With ONYX.CONNECTOR, the lighting may be used up to the performance data given. Any use other or beyond that is not considered intended use. The connection of external devices must be carried out in consultation with the specialist staff.



- It is not allowed to use radio system in areas with an increased risk of interference (e.g. hospitals, airports).
- The remote control is only admissible for devices and systems, where a malfunction in the transmitter or receiver does not pose a risk to persons, animals or objects, or if this safety risk is covered by other safety installations.



- **Follow the wiring diagram precisely!**
- We cannot accept responsibility for damage, that can result from improper installation.

4

Subject to technical modifications – Date of Issue May/2020

## Scope of delivery

### The following components are included in the scope of delivery:

- Adapter plug ONYX.CONNECTOR (quantity as per order)
- Installation instructions adapter plug ONYX.CONNECTOR

## Device description

Adapter plug ONYX.CONNECTOR  
Art. no. 50680302  
220-240 V AC / 50 Hz

The ONYX.CONNECTOR is a control device that is plugged in-between the motor / load and the power supply. It is suitable for the control of 230 V Venetian blind, roller shutter and awning motors, as well as for the switching on/off of 230 V lights.

Hirschmann cable socket STAK 3



Hirschmann connector STAS 3

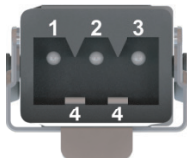


Fig. 1: Connections:

### Legend

#### Hirschmann cable socket STAK 3 for connection to the motor

- ① Neutral conductor N
- ② Phase UP
- ③ Phase DOWN
- ④ Protective conductor PE

#### Hirschmann connector STAS 3 for mains connection

- ① Neutral conductor N
- ② Phase L
- ③ Connection 3 not assigned
- ④ Protective conductor PE

Subject to technical modifications – Date of Issue May/2020

5

## Technical data

Input	220-240 V AC / 50 Hz
Output	450 VA
Nominal capacity	0.2 W
IP rating	IP54
Admissible ambient temperature	-25 °C to +55 °C
Radio frequency	868.3 MHz
Transmission power	12.6 mW
Installation type	Is plugged in-between the motor and the power supply
Dimensions LxWxH	132 (+100 mm lengthening) x29x24 mm
Weight	102 g

## Installation



Prior to starting the installation, check the proper function of the transmitter and the receiver at the desired installation position. Extended instructions for the electrical installation can be found in the download area of our website <http://www.hella.info>.



The place of installation must be selected in a way that the ONYX.CONNECTOR is always protected against wind and weather. ONYX.CONNECTOR may not be mounted to places, where rain water may be accumulated.



1. ONYX.CONNECTOR is mounted in the box system of your sun protection unit. Usually the control device is fixed to the top rail.
2. Connection to the power supply as per Fig. 2.

Subject to technical modifications – Date of Issue May/2020

6

## Connection diagram

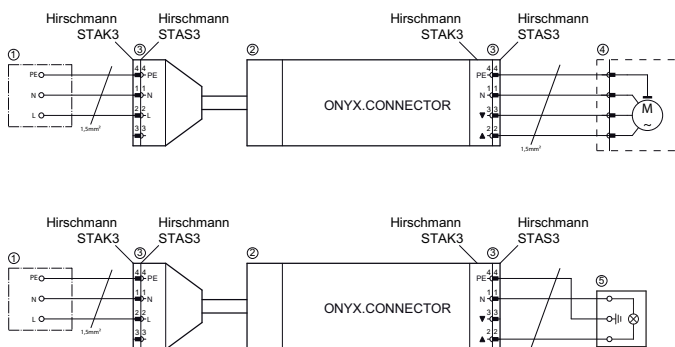


Fig. 2: Wiring diagram for Venetian blind, roller shutter and awning motor, lighting

### Legend

- |                                      |            |
|--------------------------------------|------------|
| ① Junction box                       | ④ Motor    |
| ② Adapter plug ONYX.CONNECTOR        | ⑤ Lighting |
| ③ Hirschmann connector-in connection |            |

Subject to technical modifications – Date of Issue May/2020

7

## Connection diagram



### Attention!

The motor cable must be directly connected to the control device ONYX.CONNECTOR. Clamping points/junctions in the motor cable are unacceptable.



### Attention!

When actuating the 230 V lighting, the maximum output power of 450 VA may not be exceeded. This must especially be observed with lightings with electrical ballasts, which have a high inrush current. In addition, a cut-off relay must be used with higher electric capacities.

### Connection of the mains voltage (230 V AC / 50 Hz) to the ONYX.CONNECTOR

The ONYX.CONNECTOR is connected to the mains via the mounted Hirschmann connector STAS 3. If the connection cable made available by the client is not provided with a Hirschmann cable socket STAK 3 (Fig. 4), it must be mounted later. Please observe the terminal assignment as shown in Fig. 1 and Fig. 2.

### Connecting the motor / lighting to the ONYX.CONNECTOR

The motor / lighting is directly plugged to the ONYX.CONNECTOR via the Hirschmann connector-in connection. If the motor / lighting is not provided with a STAS 3 connector (Fig. 3), it is necessary to provide the connection cable subsequently with it. Please observe the terminal assignment as shown in Fig. 1 and Fig. 2.



The unintentional drawing-out of the connection cables during operation can cause life-endangering situations due to electric shock or short circuit.

8

Subject to technical modifications – Date of Issue May/2020

## Connection diagram

### Direction assignment of the outputs when connecting a Venetian blind, roller shutter, awning motor

After having connected the drive, please check the direction assignment of the outputs. When operating the sun protection unit via ONYX®-app into the UP-direction, the motor must move into the retracting direction. When operating the sun protection unit via ONYX®-app into the DOWN-direction, the motor must move into the extending direction. If this is not the case, please change the settings for the rotational direction of the motor via your ONYX®-app, as described in the chapter "Settings".

### Hirschmann connector-in connection (IP54, max. 16 A)

- Plug STAS 3 K (Art.-No. 05350019)
- Coupling STAK 3 K (Art.-No. 05350020)

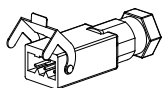


Fig. 3: STAS 3 connector with bracket

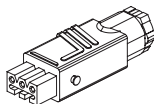


Fig. 4: STAK 3 linkage

Subject to technical modifications – Date of Issue May/2020

9

## Configuration



Before configuring the ONYX.CONNECTOR, download HELLA's free app ONYX® from the App store / Google Play to your smart phone.

Before you can use ONYX.CONNECTOR in combination with ONYX.CENTER or ONYX.CLICK, ONYX.CONNECTOR must be added in the app ONYX®. You will find all information regarding the configuration in the instructions for ONYX.CENTER / ONYX.CLICK directly in the app ONYX® or in the download area on our homepage <https://www.hella.info>.



### Precondition:

ONYX.CONNECTOR is installed (see chapter "Wiring diagram"). The mechanical end positions of the drives must be adjusted.

## Operating guidelines



### Groups

Groups with their different sun protection units can be configured freely in the ONYX®-app. All units in one group can be controlled together.



### Favourite position (heart symbol)

In the ONYX®-app six freely selectable positions per sun protection unit can be saved, which you simply can use again at a later time.



### Automatic Operation

In the ONYX®-app you can set up as many time functions as you like, which, at the desired times, make your sun protection units move to the adjusted positions. ONYX® is also provided with an astro function, which, at sunrise or sunset, moves your sun protection unit automatically to a defined position. With the help of the sun sensor a particular position can be defined, if the threshold value of the sun is below or exceeds the preset value.

10

Subject to technical modifications – Date of Issue May/2020

## Settings



### Device type

The different device types can be selected in the ONYX®-app under "advanced settings".

It is necessary to define the type of device. By selecting the appropriate category, it is assigned to this type. Device types are outdoor blind, roller shutter, awning, facade blind and light. For device types, you do not want to be displayed in the app, i.e. central pushbutton without a connected drive, the drive type "Hidden" is available. By default the device type "Roller shutter" is set.



### Outdoor blind parameters

You find the outdoor blind parameters under "advanced settings" in the ONYX®-app.

Under "Tilting time" it is possible to transmit the time the outdoor blind requires for a complete tilting to the ONYX® control. This must especially be observed, if a drive with a slow slat tilting is mounted.

#### Preset tilting times:

Outdoor blind 90°:	1.25 s
Outdoor blind 180°:	2.5 s



### Motor parameters

You find the adjustment possibilities for the motors under "advanced settings" in the ONYX®-app.

If your sun protection unit moves contrary to the direction of your control command, you can activate the reversal of the direction of rotation with the icon "Reverse direction of rotation".

In addition, the "automatic running time" can be activated/deactivated under "motor parameters". The automatic running time should be deactivated only, if ONYX.CONNECTOR is not directly connected to a drive, i.e. to a cut-off relay. The running time can be adjusted manually, when the automatic running time is deactivated. As a standard the automatic running time is activated.

Subject to technical modifications – Date of Issue May/2020

11

## Settings



### Wind resistance class

You find the wind resistance classes in the ONYX®-app under "advanced settings". These preset wind resistance classes are only relevant, if the optional weather sensor ONYX.WEATHER is used. Please note, that the real values set depend on the installation situation on-site; these values are available in the documentation of the sun protection device and must be strictly observed!

#### Preset wind resistance classes:

Roller shutter	Class 4 (13.8 m/s)
Awning	Class 2 (10.7 m/s)
Facade blinds	Class 4 (13.8 m/s)
Outdoor blind	Class 4 (13.8 m/s)



### Output selection

This adjusting possibility is only available for the device type "light".

Under "output selection" you can select which connection at the STAK 3 output is to be used for the actuation of the lighting. It is possible to select between "Channel A" (connection 1 and 2) and "Channel B" (connection 1 and 3). As a standard "Channel A" is set.



A detailed description of all settings of the ONYX®-app are available in the download area of our website <https://www.hella.info>.

Subject to technical modifications – Date of Issue May/2020

12

## Ideal use of the radio signal



In case of bad reception, the position of the ONYX.CONNECTOR must be changed.



Radio systems that send on the same frequency may cause interference with reception. It must be considered that the range of the radio signal is limited by statutory regulations and structural measures.

## Fault removal

Problem	Possible cause	Troubleshooting
Drive does not run or runs only briefly.	Motor connection incorrect.	Check the connection as per Fig. 2. Change connection, if necessary.
Lighting can not be controlled.	Incorrect connection.	
Drive runs into the wrong direction.	Directions were interchanged during installation.	Perform the reversal of the direction in the ONYX®-app, as described in the chapter "Settings".
The adapter plug for the control can not be controlled in the ONYX®-app (off-line).	<ul style="list-style-type: none"> <li>- The wrong control device was added.</li> <li>- No mains voltage at the adapter plug for the control.</li> </ul>	<ul style="list-style-type: none"> <li>- Check if the serial number is correct and add it again.</li> <li>- Provide mains voltage with ONYX.CONNECTOR.</li> </ul>
Poor or no radio reception.	Adverse position of ONYX.CENTER / ONYX.CLICK or	Reposition ONYX.CENTER / ONYX.CLICK or ONYX.CONNECTOR.

Subject to technical modifications – Date of Issue May/2020

13

	ONYX.CONNECTOR.	
Device locked.	ONYX.CONNECTOR is already configured in another network.	Follow the instructions on your screen, perhaps voltage interruption.

Subject to technical modifications – Date of Issue May/2020

14

## Disposal



Dispose of the device in accordance with the current country-specific regulations for electronic scrap (e.g. collecting points).



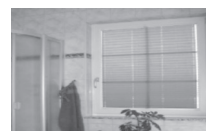
### HELLA Interior Venetian Blinds

regulate the lighting in a room very comfortably, immediately gracing it with much more atmosphere.



### HELLA Insect Screens

and you decide who is allowed to come in and who isn't.



### HELLA Pleated Blind

folds up very compactly and protects very well against the sun and nosy glances where only little space is available.



### HELLA Venetian Blinds

serve for the light regulation, as view protection, anti-glare blind and heat protection.



### HELLA Front-mounted Roller Shutter

for more safety and protection against rain, wind, heat, the cold, noise and nosy glances, also available for subsequent installation.



### HELLA Facade Awning

with exposing mechanism for lovely facade design with perfect heat protection and anti-glare blind.

For questions, wishes and ideas:

**HELLA Infoline +43/(0)4846/6555-0**

**HELLA Sonnen- und Wetterschutztechnik GmbH**

A-9913 Abfaltersbach, No. 125

Tel.: +43/(0)4846/6555-0

Fax: +43/(0)4846/6555-134

e-mail: [office@hella.info](mailto:office@hella.info)

Internet: <http://www.hella.info>