

**HELLA**

THE WORLD OF THE HELLA GROUP

**WE TAME  
THE SUN**



# CONTENTS

<b>The World of HELLA</b>	<b>4</b>
<b>Sustainability</b>	<b>10</b>
<b>Product portfolio</b>	<b>16</b>
<b>Terrace &amp; Garden</b>	<b>18</b>
Awnings	
Terrace roofing	
Overglass and underglass awnings	
Wind and sight screens	
<b>Windows &amp; Facade</b>	<b>28</b>
Outdoor blinds & exterior Venetian blinds	
Roller shutters	
Vertical awnings	
Insect screens	
Fall protection	
Interior blinds	
<b>Building &amp; Renovating</b>	<b>46</b>
Box systems	
Soffit systems	
Top-mounted systems	
Installation systems	
Plaster base systems	
<b>Smart Home system</b>	<b>60</b>
ONYX	



# WELCOME TO HELLA

At HELLA, we put the skill and experience we have gained from more than half a century of company history into the development and production of high-quality sun and weather protection systems. Our head office and our roots are in Abfaltersbach, a small village in the East Tyrolian mountains in Austria. Influenced by the values of our home region like honesty and reliability, we have grown into one of Europe's leading brands for sun and weather protection, as well as becoming a driving force for technology and design.

Our product range extends from sun and weather protection solutions for indoor and outdoor use to networked smart home systems for trend-setting residential and commercial buildings. On the one hand, HELLA's products create individual light conditions and protect against the sun and weather, and on the other hand they ensure the security of the building itself. Finally, they help to reduce energy consumption and optimise the energy balance of the building. HELLA is just as sustainable as its products. The

company produces more energy at its headquarters than is consumed thanks to its own hydroelectric power plant and participation in a biomass heating plant. In this way, HELLA creates comfort, meets individual protection requirements and makes a contribution to quality of life. The company's performance promise and diverse product portfolio are presented on the following pages.

  
**Andreas Kraler**  
Managing Partner  
HELLA Group





# A EUROPEAN PLAYER FROM ABFALTERSBACH

HELLA is one of the leading European suppliers of sun, light and weather protection technology. The company has its headquarters in Abfaltersbach in East Tyrol plus its own branch offices in nine European countries, two of which have production plants. With 1,300 staff members, HELLA generated a turnover of € 214 million worldwide in 60 markets in 2023.

The company was established at its current location in 1959 and has been owned by the Kraler family ever since. After continued expansion of the regional and national business, this growth accelerated after 2000 and was completed in 2016. In recent years, the focus has been on the group-wide

standardisation of business processes and the organisational and technical development of the company. All of this means that HELLA is now ready for the next growth phase in the booming sun protection industry.

HELLA is the market leader in Austria and South Tyrol. From the point of view of the European market, the company is one of the top five providers of sun and weather protection systems. Germany is one of the most important growth markets for the HELLA Group.

**1959**

Company founded by  
Alois Kraler

**1974**

Franz Kraler takes over as  
the second generation

**1981–  
1990**

Continuous expansion of  
the regional and national  
business

**from  
2000**

Expansion through several acqui-  
sitions and takeovers in Europe

**2017**

Andreas Kraler takes  
over as the third  
generation



# THE HELLA GROUP

An international enterprise with more than 1,300 employees

## The innovative all-round provider

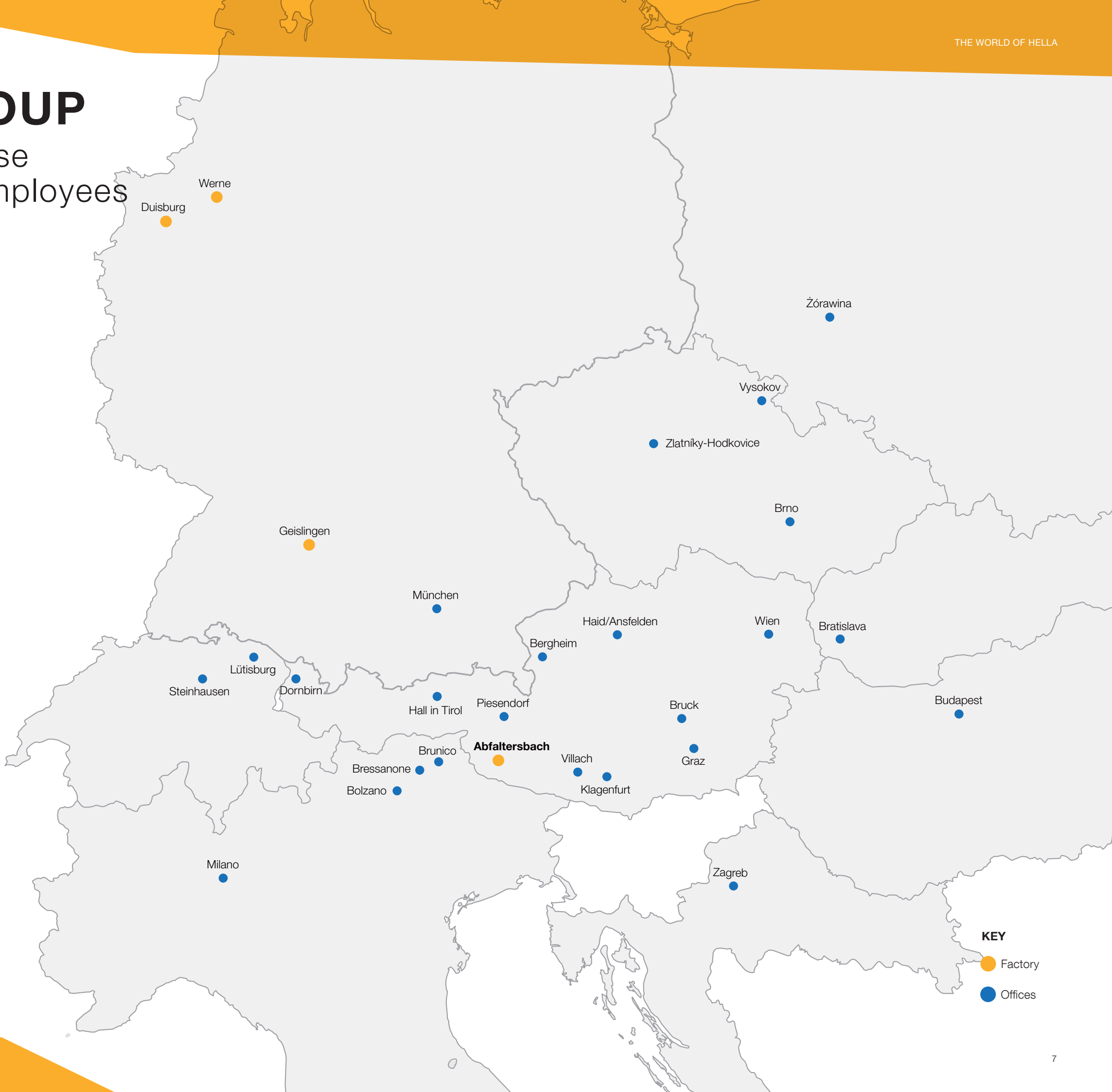
HELLA's product portfolio is continuously expanding in line with architectural trends. The range extends from outdoor blinds and roller shutters to awnings, facade blinds and pergolas as well as solutions for building shells and electronic control devices for these systems. The development of HELLA's portfolio is built on the innovative strength of its employees, which has been established over several decades. HELLA's products create personalised light conditions and protect against the sun and weather, and they ensure the security of the building itself. Finally, they help to reduce energy consumption and optimise the energy balance of the building. In this way, HELLA creates comfort, meets individual protection requirements and makes a contribution to quality of life.

## Premium quality from a single source

Our commitment to leadership in terms of quality can be seen in both the development of our product portfolio and within the vertical value chain with regard to our clients. HELLA does not only deliver products and software, but also provides installation and after-sales services, as well as repairs and spare parts. Premium quality is the benchmark: all products are manufactured individually to order, and all of the integrated components are designed for robustness and a long service life, which contributes to the sustainability of HELLA products.

## Four plants in two countries

HELLA has its own branch offices in nine European countries, with 28 sales entities ensuring maximum local presence. Its high-quality products are manufactured at four plants. In addition to the production facility at the headquarters in Abfaltersbach in Austria, the company also has three manufacturing plants in Germany in Werne, Duisburg and Geislingen.



**KEY**

- Factory
- Offices



# *Architecture should speak of its time and place.*

Walter Gropius  
German architect and  
co-founder of the Bauhaus style  
(1883-1969)





# SUSTAINABILITY AT HELLA

For HELLA, sustainability is more than just a buzzword - it's a commitment to a holistic attitude and has been practised by the owners for decades.

Consistently acting in a sustainable way means acting in a manner that is environmentally friendly, economical and socially sustainable. The company maintains relationships with customers, suppliers and employees on a long-term basis. The processed slat belts used in all of our outdoor blinds, for example, consist of 80 per cent recycled aluminium. HELLA is just as sustainable as its products. The company produces more energy at its headquarters than is consumed thanks to its own hydroelectric power plant and participation in a biomass heating plant. The energy management principle "Saving, generating and stocking energy" defined at the company headquarters is constantly being extended to further business locations.

## HELLA's contribution to climate protection

The most sustainable solution for a comfortable indoor climate and protecting against the summer heat is automated outdoor shading. The main function of external sun protection is to reflect the sun and ensure that the heat does not penetrate into the interior. With HELLA's own control system ONYX, which can be connected to all common smart home systems, the sun protection systems become even more sustainable and allow the sun to get in only where it is wanted.

The system can also react to the weather in order to optimally adapt the sun and heat protection to the conditions. The ONYX weather sensors detect influences such as wind speed, sun intensity and temperature on the facade. The obtained data can then be used to customise the products to residents' needs.

## Smart networking is the future

With integration into the smart home, sun protection products also have enormous potential for a positive building energy balance. Maximum comfort, energy savings and sustainability can be achieved by networking with other control systems such as heating or ventilation in the building. HELLA's own ONYX control system is interface-compatible with international systems such as Alexa or Google Home and connects to all other types of building services. Smart home integration focuses on residents and their use of space, including their daily routine and preferences.

## Energy saving with sun protection

Depending on the building, age and size of the window area, up to 30 per cent of heating energy can be saved using automated, external sun protection, like roller shutters. Savings of up to 50 per cent can also be achieved when cooling. Sun protection products have a clear advantage over air conditioning systems when it comes to sustainability. The latter not only consume energy, but also directly contribute to warming the urban space through the warm exhaust air. Intelligent sun protection systems thus make an important contribution to CO<sub>2</sub> savings and climate protection.



# SUSTAINABILITY

## THIS IS HOW HELLA DOES IT...

# 2005

### Method of construction

Since 2005, new production halls have been built using low-energy construction methods.

# 80 %

### A raw material with added value

The lamella belts on all outdoor blinds have a recycled aluminium content of **80 per cent**. Approximately two thirds of this is our own process scrap from the rolling mill and about one third of the scrap comes from external sources.

# 1985

### Clean energy from own sources

The company produces more energy at its headquarters than is consumed thanks to its own hydroelectric power plant and participation in a biomass heating plant. As early as **1985** HELLA took an important step towards reducing the company's ecological footprint with the construction of its own power plant.

# 12 mil.

### Power from nature

As early as 1986, the company's own power plant was put into operation with an annual output of twelve million kilowatt hours. It uses the natural power of streams around two kilometres away.

## ... AND FOR THE USER THAT MEANS...

# 10°

Effective sun protection reduces the amount of solar radiation by up to 90 per cent and thus keeps rooms around 10 degrees cooler.

# 50 %

Systemic sun protection is essential for the energy consumption of a building: less heating in winter and less cooling in summer is the motto! Depending on the building, age class and size of a window area, up to 30 per cent of heating energy can be saved with automated sun protection. Savings of up to 50 per cent can also be achieved when cooling.<sup>2</sup>

# 80 %

The conscious use of daylight can save up to 80 per cent in lighting energy.<sup>3</sup>

Intelligent sun protection can be harnessed to the fullest extent **if it is integrated into the planning phase at an early stage.**

# 30°

Sun protection products have a clear advantage over air conditioning systems when it comes to sustainability. The latter not only consume energy, but also directly contribute to warming the urban space through warm exhaust air. For example, cooling a room by 10° using air conditioning requires the same energy as heating it by 30°.<sup>1</sup>

<sup>1</sup> Prognose ETH Zürich  
<https://journals.plos.org/plosone/article?id=10.1371/journal.pone.0217592>.

<sup>2</sup> Industry Association for Roller Shutters, Sun Protection, Automation (IVRSA).

<sup>3</sup> BVST Federal Association for Sun Protection Austria – sun protection facts 06-2020.



# EVERYTHING FROM A SINGLE SOURCE

Thanks to its innovative strength, HELLA, as a complete provider, offers a broad portfolio of customised sun protection solutions. Premium quality is the benchmark here. Be it refitting, a refurbishment or a new construction – HELLA has the right solution for every building project!

Terrace & Garden



Window & facade



Build & Renovate



Control devices



# HELLA

WE  
DESIGN  
COOL  
SHADOWS



GARDEN AND TERRACE BECOME **AN OUTDOOR LIVING ROOM**  
Awnings and pergolas provide cool shade and ensure the ideal microclimate on sunny days. Perfection can be seen and felt in every technical detail. That is outdoor living made by HELLA!

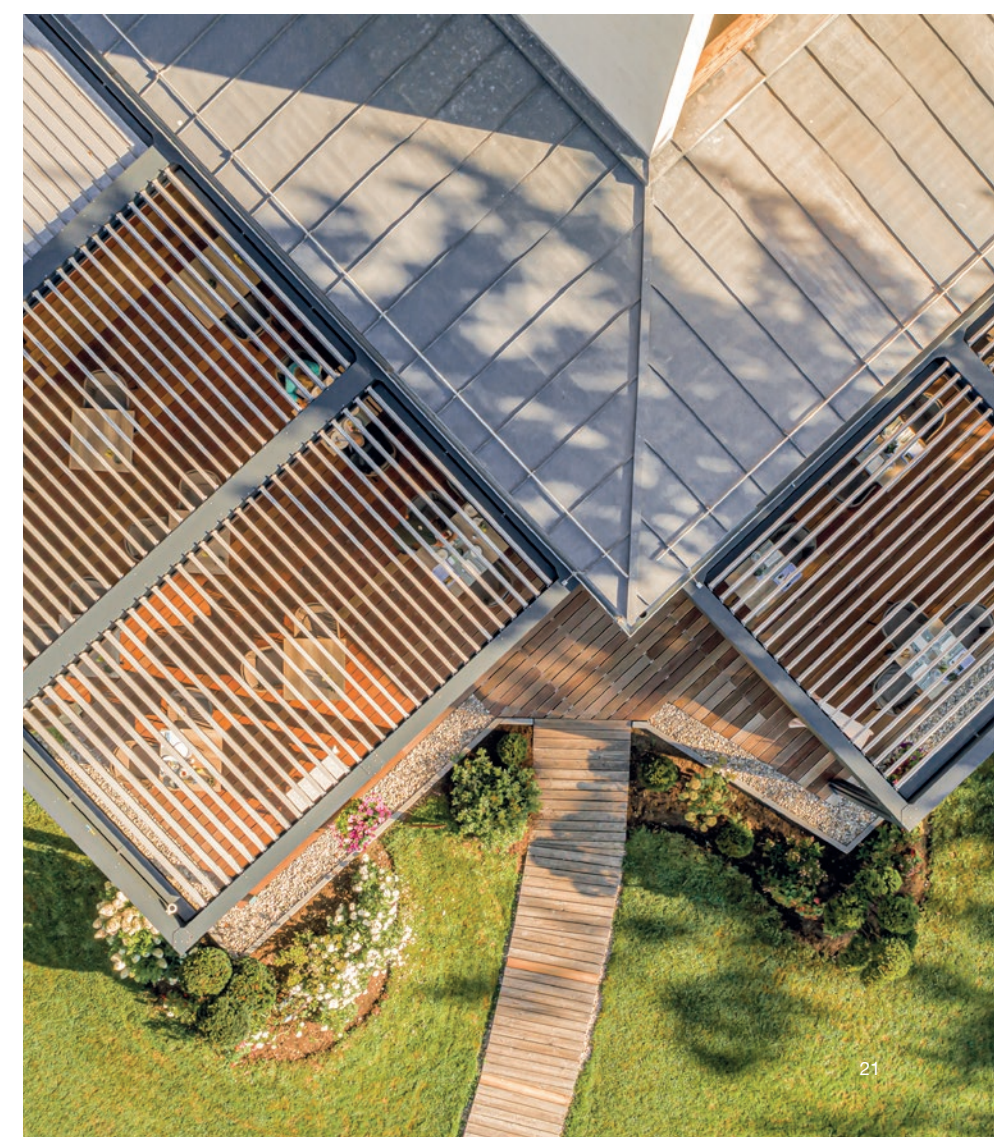


BEST DISPLAY CATEGORY



# TERRACE & GARDEN







# AWNINGS

## Stylish outdoor living spaces

Awnings from HELLA are accurately manufactured right down to the last detail and create open space for relaxed outdoor living. The HELLA awning range features elegant designs, a diverse fabric collection and, depending on the model, smart accessories such as light and heat sources, weather sensors, angle of inclination adjustment and digital operability.

### Cassette awnings



#### CLEO

The CLEO awnings combine the elegant design with an oval cassette. Their lightweight construction and their many mounting options make them flexible to use. They are suitable for wall and ceiling mounting and can be used in many different ways by adjusting the angle of inclination.

#### C2

The very flat box has a modern design and adapts to almost any architecture. It can be combined in a modular way and is perfectly suitable for shading large surfaces. The Vario-plus roller blind is the ideal solution for when the sun is low in the sky.



#### PAN

This cassette awning displays a cubic design and beautiful lines, and is uncompromisingly functional. The modular method of construction facilitates both transport and installation.



### Open and half-open awnings

The awning models from the VIVA and AREIA series round off the range. They are used wherever roof overhangs or balconies are used as protection against the weather or where simple protection against the weather is required. Like all HELLA awnings, the elegant shade dispensers are made to measure and can be driven by crank or motor.



#### VIVA

The half-open awning with many functions.



#### AREIA

The open all-round awning with superior technology.



# TERRACE ROOFING

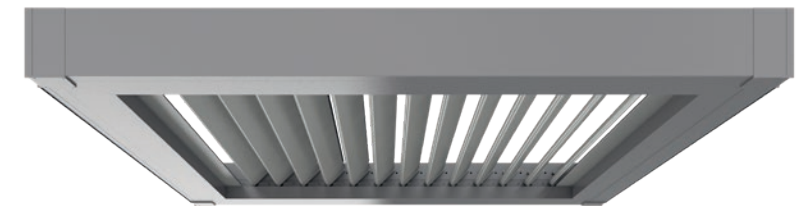
For shade in sunny places

Due to their robustness and weather resistance, terrace roofing is the perfect alternative to umbrellas and awnings. The VENTUR slat roof, SINTESI pergola and ELEGANZA pergola awning are not only elegant providers of shade, they also protect against rain and, depending on the configuration, wind. The VENTUR and SINTESI models offer optimal roofing according to your needs and are available in different sizes. The VENTUR SIDE and TERRA SIDE products offer protection from the wind and prying eyes.



## VENTUR

VENTUR is a slat roof with movable aluminium slats and a bioclimatic effect. With VENTUR SIDE optional vertical shading.



## VENTUR FREE

VENTUR FREE is a slat roof without columns and is integrated on, or in, existing structures or mounted between two walls.



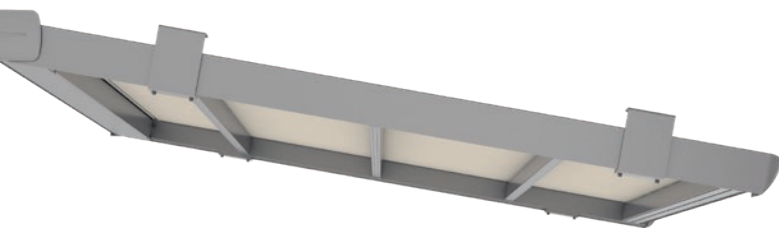
## ELEGANZA

The elegant pergola awning with a folding roof and TERRA SIDE optional vertical shading.



## SINTESI

The innovative pergola with a folding roof and optional vertical shading TERRA SIDE.



## SINTESI FREE

The ideal solution for existing structures: due to the small space required for the fabrics drive mechanism, it fits in easily in existing structures.

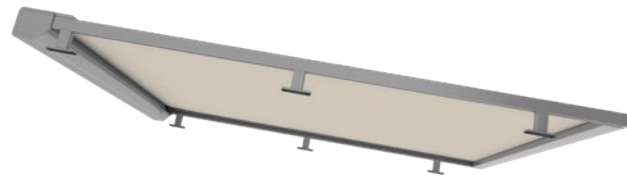




# OVER-GLASS AND UNDER-GLASS AWNINGS

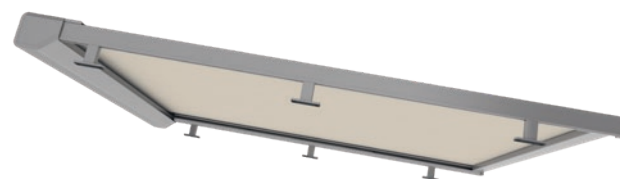
## Mediterranean lightness

The over-glass and under-glass awnings SOLANYA and SOLEYA captivate thanks to their minimal and linear structure. They are available both as under-glass and over-glass awnings.



### SOLANYA

SOLANYA is the perfect awning for shading glass roofs. It can be mounted on or under the glass roof and blends inconspicuously into the overall appearance thanks to the slim construction and small box size.



### SOLEYA

Due to its robust construction, SOLEYA is suitable for shading large glass roofs on terraces with an area of up to 30 square metres. With the under-glass version, integrated and dimmable LED strips provide an atmospheric ambience on request. In the protect version, the fabric is guided along the sides, which guarantees a gap-free appearance and high wind stability.

# WIND AND SIGHT SCREENS

Well protected from the wind and prying eyes



### Wind and sight screens

Available in two heights and two frame colors, the wind and sight screens from HELLA can be fitted with various fabrics made of acrylic and polyester.







# **WINDOW & FACADE**







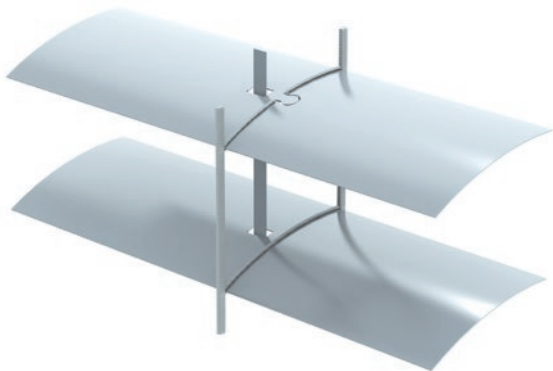
# OUTDOOR BLINDS & EXTERIOR VENETIAN BLINDS

The prettiest shape to control the daylight

Outdoor blinds and Venetian blinds from HELLA do not only darken the rooms – they also control and direct the daylight as desired by the user. They provide comfort in your living space and create the perfect conditions for productivity in a working environment. Besides light control, they also influence the indoor climate, because they reflect the heat of the sun and therefore provide considerable protection against the summer sun.

## Exterior Venetian blinds

Exterior Venetian blinds from HELLA have flat and flexible C-shaped slats and are characterised by soft lines and a small package height.

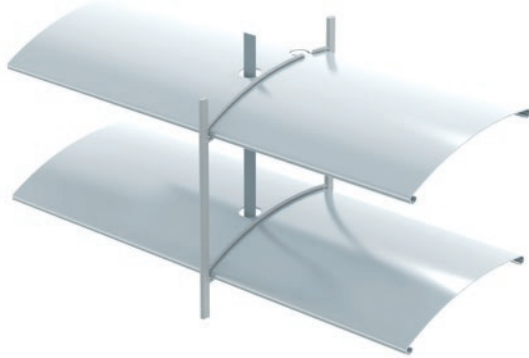


### C-shaped slat (flexible flat)

Our exterior Venetian blinds are flexible, do not appear bulky yet still provide perfect protection.

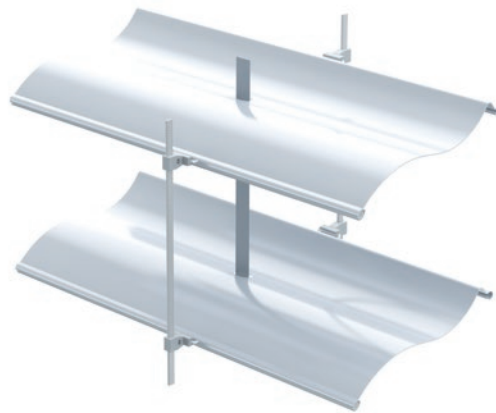
## Outdoor blinds

High-quality outdoor blinds from HELLA have bordered C-, S- and Z-shaped slats to ensure the perfect light – as and when required, from pleasantly light to almost completely dark.



### C-shaped slat

The classic variant. Visually and technically sound.



### S-shaped slat

Elegant wave contour and perfect daylight control.



### Z-shaped slat

Daylight control with a modern geometric shape.

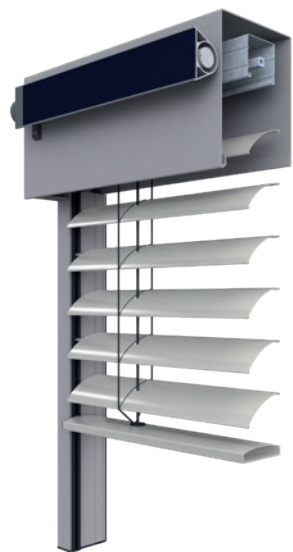






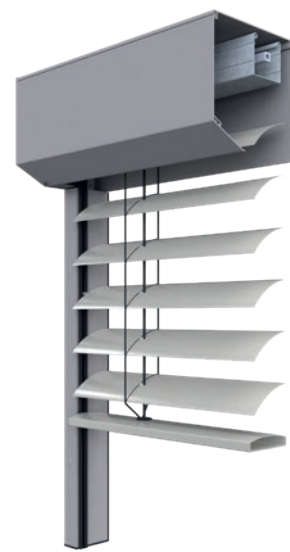
## Front-mounted systems

The variety of installation options for the HELLA outdoor blinds and Venetian blinds in the front-mounted system allows manifold design flexibility. Different box forms and colors help to achieve individual visual preferences. The products are also available with an insect screen.



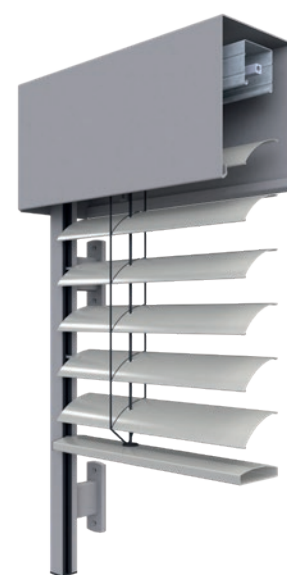
### Edged prefabricated system

The front-mounted system with canted aluminium channel and powder-coated screens is suitable for simple clip-on installation on flush-mounted guide rails. The product is also available with a solar package.



### Extruded front system

The extruded aluminium front-mounted system is available with a round, square or rectangular box in the same dimensions as the roller shutter.



### Facade system self-supporting

Facade systems from HELLA with canted aluminium channel are designed for quick and easy installation with few fastening points. The system is also available with a solar package.



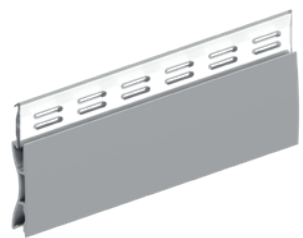


# ROLLER SHUTTERS

## Maximum protection and optimal indoor climate

Roller shutters fulfil important functions, such as protection against light, heat, cold and noise. They also act as an efficient “climate buffer”: In winter, roller shutters act as an additional pane of thermal insulation. As a result, you save energy, reduce the cost of heating and cooling and create a feeling of comfort in the room. In addition, roller shutters from HELLA can effectively improve burglary protection.

### Profiles



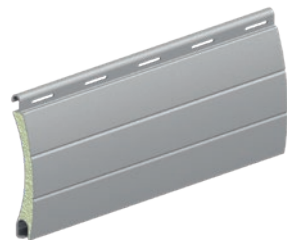
#### Daylight profile

The transparent intermediate profiles enable daylight regulation while protecting your privacy. Heat, cold and noise remain outdoors!



#### Safety profile

The double-walled, extruded and extremely stable aluminium profile with light gaps is foam-free and is characterised by the especially thick profile.



#### Aluminium profiles

The hollow space of the double-walled, roll-formed aluminium profile with light gaps is filled with polyurethane foam.

## Front-mounted roller shutters

With either a round or square box, top-mounted roller shutters can be flawlessly integrated into the design of the facade. The products are also available with insect screen systems.



#### nova front-mounted roller shutter extruded

With different box shapes and a wide range of colors for the boxes and roller shutter panels, they add highlights to any facade. The front-mounted roller shutter can be equipped with a solar package for a self-sufficient energy supply.



#### nova front-mounted roller shutter extruded – Top-Safe

The burglar-resistant front-mounted roller shutter, Top-Safe, protects thanks to innovative security details. It contains a safety guide rail as well as roller shutter profiles, end rod, reinforced box design and a shaft with patented anti-lift device.



# VERTICAL AWNINGS

## Textile trendsetter

HELLA is responding to the trend for side seam-guided and large-format systems with its range of vertical awnings. The three awning categories, front-mounted, recess and concealed, allow the customer fast orientation. All three designs are available as a side seam or cable-guided version. With its vertical awnings range, HELLA has a suitable solution for every installation location.

## Front-mounted awnings



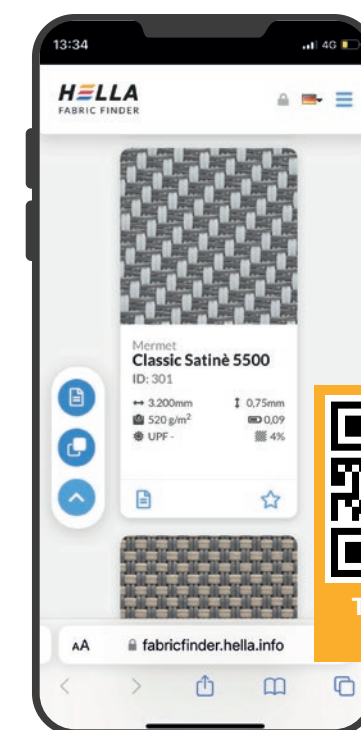
### Front-mounted awning protect

This variant uses a two-piece extruded cassette. It is possible to fix the guide rails directly or with the help of spacers. The side seam-guided covers are especially suitable for wind-exposed locations. The front-mounted awning protect is also available with a solar package: the built-in solar panels generate electricity all year round even when the weather is slightly cloudy. This makes you independent and saves energy.



### Front-mounted awning cable guided

With particularly small cassettes, this design can easily be installed in any window soffit using box brackets. The spring integrated into the box keeps the cables under tension at all times.



TRY IT OUT  
NOW

## FABRIC FINDER

### The way to the right fabric

The FABRIC FINDER makes it easier for architects, planning teams and end customers to select the right fabric. The tool is the perfect guideline with regard to factors such as color, type of fabric, fire class, tear and tensile strength, solar transmission, reflection and absorption, material, manufacturer and a lot more.

The FABRIC FINDER is the first tool that enables g-value calculations with project-specific glass. The user can set all parameters individually to get an optimum search result. This way, the right fabric can be found quickly and specifically! The tool is available in English, German, Italian and French.

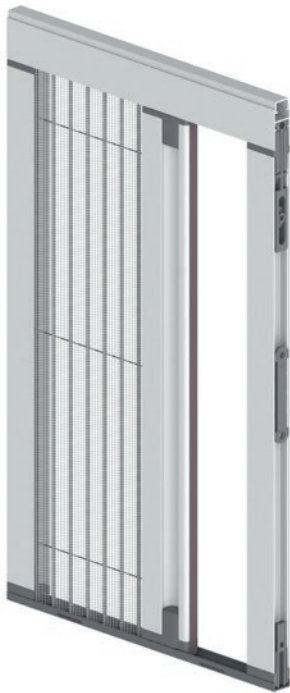




# INSECT SCREENS

Protection for  
demanding  
conditions

For any window and door opening, any constructional situation and for any climate zone, HELLA provides the perfect protection against insects – effective and beautiful, perfectly integrated and convenient to operate. Even retrofitting is possible at any time. HELLA offers insect screen fabrics that can do practically everything from screening to pollen protection.



## Pleated blind

The pleated insect screen offers an effective and space-saving solution as protection against insects. The especially low bottom running rail facilitates movement through the screen.



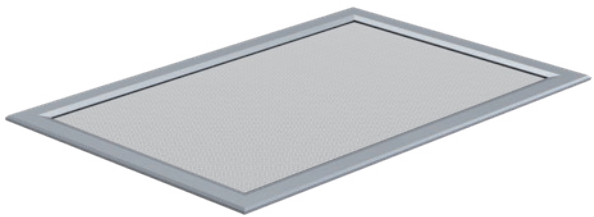
## Frame

The HELLA insect screen frames are suitable for all common door and window openings and can be mounted in a few simple steps. Small installation dimensions, various fastening options and the flexibility of the frames provide customised protection.



## Roller blind

The roller blind is particularly space-saving. The spring balancer drive enables quick opening and closing of the roller blind, whereas the recoil brake stops it from shooting up. The box is really compact and suitable for any window soffit.



## Light shaft cover

Protect light shaft covers, light and cellar shafts against leaves, rodents and insects. They also stand out thanks to their high weather resistance, light transmission and air permeability.



# FALL PROTECTION

## Safety with aesthetics

For HELLA, maximum safety requirements and high aesthetic demands aren't opposite: HELLA is the only supplier of sun protection systems who also offers a comprehensive selection of fall protection solutions. With the integrated glass, grid, rod and bar solutions, classic, elegant and creative facade accents are made possible. In addition, planning is straightforward due to there being no need for individual approvals and it's possible to get a general building inspection test certificate (AbP).



### Glass

The glass fall protection combines safety with modern, transparent design. Glass systems are used for plastic, wooden, timber/aluminium composite and aluminium windows.



### Grid

If a classic balustrade or a timeless French balcony is preferred, fall protection made of aluminium or steel is the right solution for every building project.



### Panel

The fall protection solutions offer creative design freedom and a versatile selection of different design templates. Be it a perforated look with a custom-designed pattern or continuous motifs, the window fall protection made of sheet aluminium combines innovation and functionality with freedom of pattern selection, approved safety and high ease of installation.



### Rod

The rod system is a timeless and simple lintel bar for windows. Rod systems are suitable for low balustrade heights in new buildings or for building renovations. This version is available as an option in an aluminium round pipe.

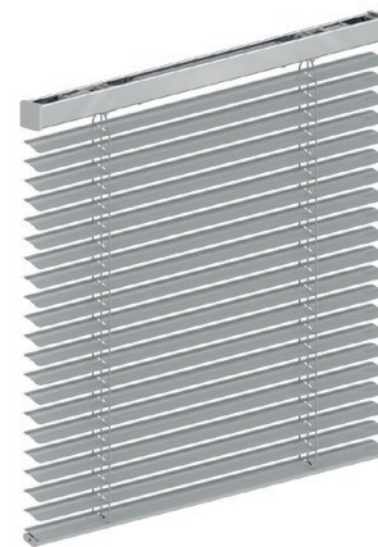




# INTERIOR BLINDS

## Ambience and comfort

Interior textile sun shading with its different design variants creates decorative accents in modern interior decoration. Be it interior roller blinds, pleated blinds, vertical blinds or blackout elements – interior textile blinds by HELLA provide an abundance of creative opportunities. Thanks to different materials and a wide variety of color options, the interior textile blinds score points for both functionality and creativity. They regulate the amount of light, offer flexible visual protection and create decorative accents.



### Interior Venetian blinds

Interior Venetian blinds control and direct the incoming daylight in a convenient way. This means, the sun can be used effectively as a natural source of light for illuminating the rooms. Different types of slats and the broad color spectrum can be used specifically to design the ambience of the room.



### Pleated blinds

Not only is the pleated blind a contemporary bestseller, it is also the ultimate all-rounder. Whether the window is triangular, trapezium-shaped or round – custom-made pleated blinds overcome every architectural challenge.



### Interior roller blinds

Flexible, practical and classy – the roller blind is the unmatched classic among the decorative sun protection products. The fabric rolls up and unrolls perfectly without creasing and it can be operated manually or electrically.



### Vertical blinds

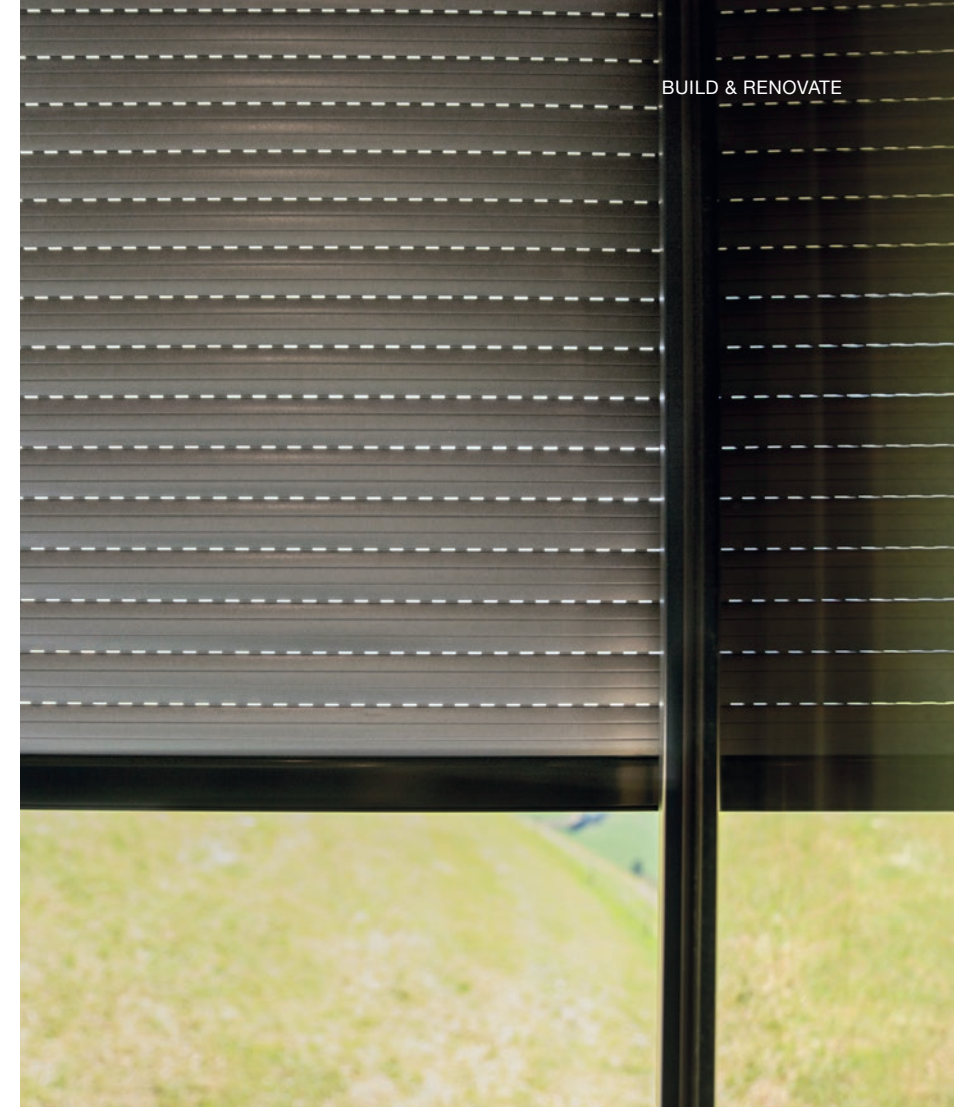
Be it small window areas or conservatories – vertical blinds ensure maximum protection from the sun and heat and are best suited to the stylish designs of large residential, office and commercial premises.





**BUILD &  
RENOVATE**







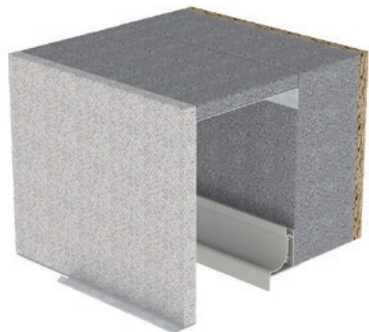


WATCH THE  
VIDEO!

# BOX SYSTEMS

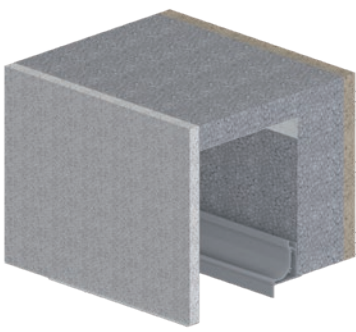
## Window and sun protection with quick, standardised installation

Box systems from HELLA save time and money, avoid construction errors, optimise construction quality and meet the standards of the future. Every crate system in the TRAV product group fulfils the individually adapted needs of its respective target group. Prefabricated systems that help to reduce the number of trades involved are very much in demand. A major advantage of the box system, TRAV, is the possibility of combining multiple components such as outdoor blinds, roller shutters or vertical awnings with insect screens.



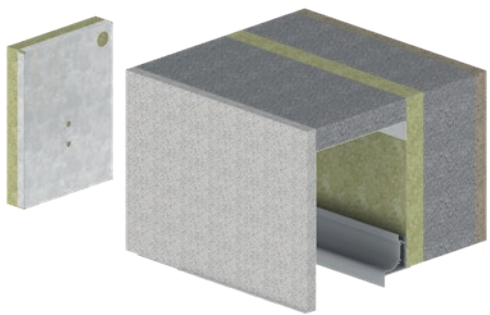
### TRAV

The structurally optimised box system, TRAV, is integrated into the shell of the building. The massive volume of insulation makes a significant contribution to heat and noise insulation.



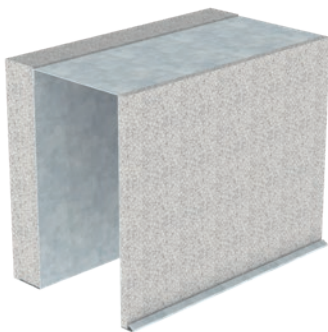
### TRAV Active

The TRAV system from HELLA, a structurally optimised solution for the installation of roller shutters, outdoor blinds, Venetian blinds and textile blinds in recesses, is integrated into the shell of the building.



### TRAV Protect

Sustainable construction has never been so safe! In addition to a protective function against fire flashover from the inside to the outside, the TRAV Protect lintel box system also offers a sound insulation value of up to 50 decibels (dB) for noise immissions from the outside to the inside.



### TRAV Nische

The TRAV Nische is a channel system made of galvanised sheet steel with a plaster base for integration into the thermally insulated facade.

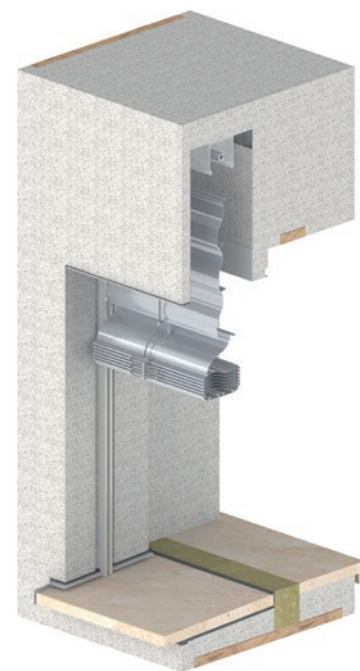




# SOFFIT SYSTEMS

## TRAV frame and done

How do you integrate the complex combination of window, window sill and sun protection into any facade in a technically simple and structurally perfect way? The answer is the TRAV frame. A building block is installed in the window opening that seamlessly integrates the window and the sun protection. The easy installation saves time and money. Thermal bridges, cracks in the plaster and other construction-related faults are almost eliminated, and the energy values and noise insulation are simply brilliant.



### TRAV frame outdoor blind

Outdoor blinds and exterior Venetian blinds integrated together with the window into the facade. Window position is centred or flush on the inside. Optionally available with an insect roller screen.



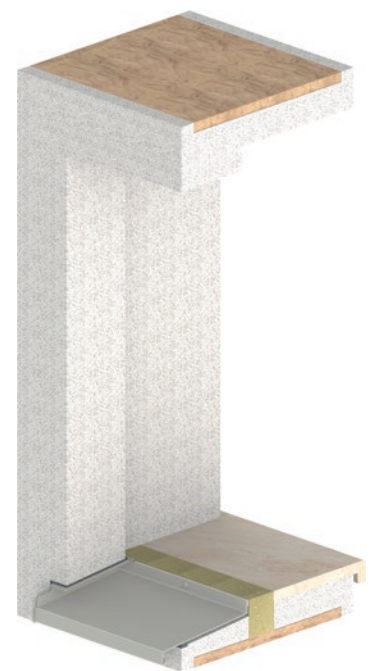
### TRAV frame roller shutter

Roller shutters are integrated together with the window into the facade. Window position is centred or flush on the inside. Optionally available with an insect roller screen.



### TRAV frame screen

Textile sun protection is integrated together with the window into the facade. Window position is centred or flush on the inside. Optionally available with an insect roller screen.



### TRAV frame window frame

For windows with folding shutters or without sun protection. Window position is centred or flush on the inside.

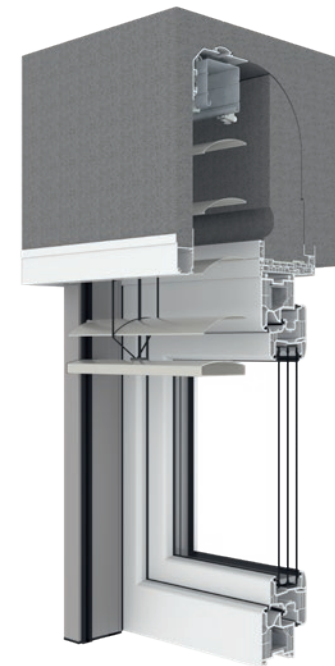




# TOP-MOUNTED SYSTEMS

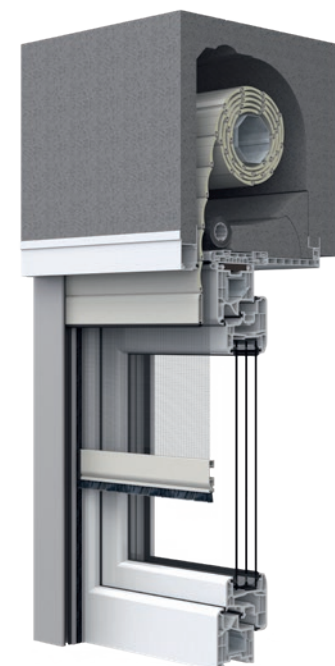
Perfectly integrated sun protection

HELLA offers a wide range of top-mounted boxes. When it comes to heat and sound insulation, airtightness and statics, the TOP FOAM represents an excellent solution. The TOP FOAM consists of add-on elements made of non-shrink polystyrene that combine the best insulation values with maximum flexibility. This is not only shown by the different box heights and box depths for all installation situations, but also by the compatibility with sun blinds and insect screens. Be it a roller shutter, outdoor blind or insect screen, any requirement can be incorporated. The connection to the window via clip technology makes the boxes extremely easy to install.



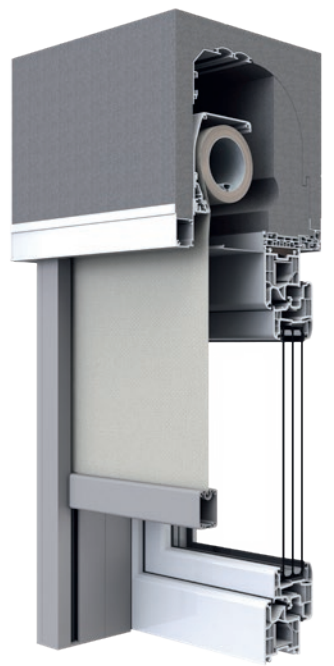
## TOP FOAM store

This is suitable for monolithic masonry, insulated facades and brick and timber post and beam construction.



## TOP FOAM RvU or RvA

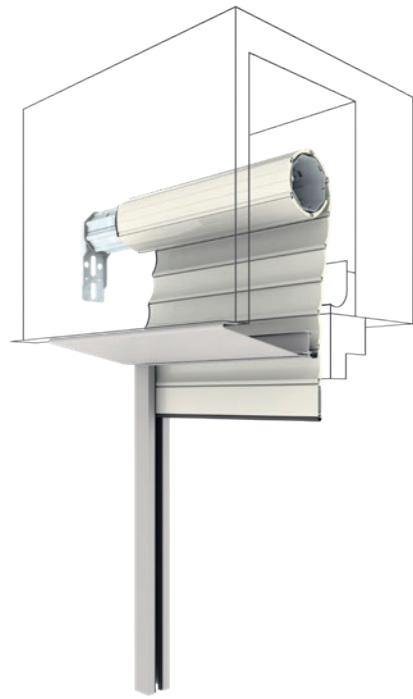
This is equipped with an integrated shaft to accommodate roller shutters and allows inspections from below and outside.



## TOP FOAM screen protect

The add-on system with an integrated shaft to accommodate textile blinds offers perfect glare protection and allows inspection from the outside.





**Built-in roller shutter**

The built-in roller shutters offer flexible application options and are available in a wide range of profile types.

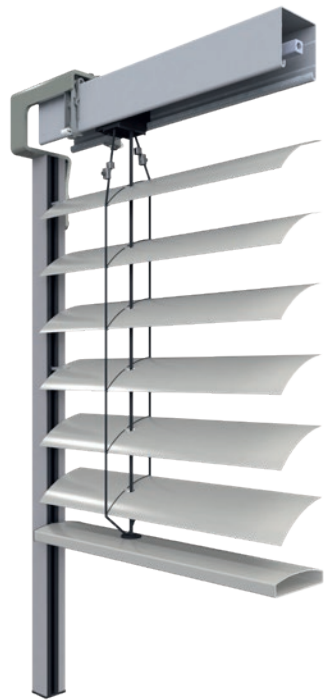


**Shaft roller shutter**

The shaft roller shutter is the ideal product for renovations. Installation in the existing shaft is simple and uncomplicated.

# INSTALLATION SYSTEMS

For integration into existing shafts



**Shaft systems self-supporting**

The self-supporting shaft Venetian blinds or outdoor blinds can be easily mounted by attaching to the guide rail and in the shafts provided by the customer.



**Basic awning cable-guided**

The cable-guided classic allows for simple bracket installation of the awning in the recess on site.



**Recess awning protect**

This side seam-guided model with self-supported, extruded half-cassettes is ideally suited to integration into on-site recesses.





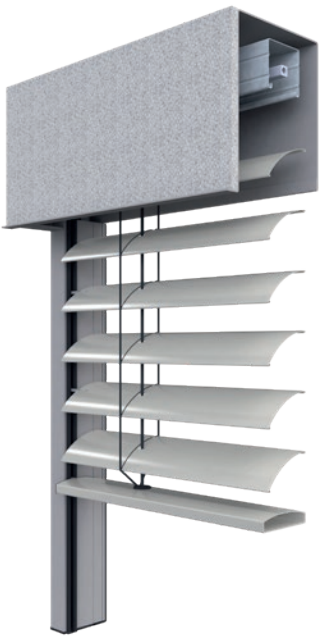
# PLASTER BASE SYSTEMS

For integration into plaster facades



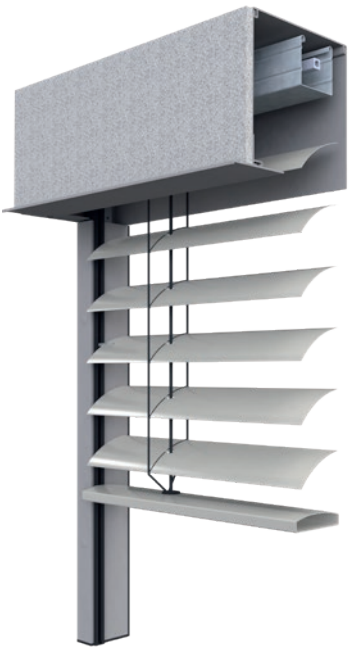
**nova front-mounted roller shutter extruded with plaster base**

The square nova front-mounted roller shutters with plaster base are ideal for installation in lintel openings.



**Front-mounted system canted with plaster base**

The front-mounted system with canted aluminium duct can be seamlessly integrated into plaster facades thanks to the plaster base applied at the front.



**nova front-mounted boxes with plaster base board**

The nova extruded aluminium front-mounted system is available with a square box shape with plaster base board at the front in the same box dimensions as the outdoor blinds and external Venetian blinds.



**Concealed awning cable-guided**

This product is specially designed for insulated plaster facades. Thanks to the easy-to-install box system with plaster bases, it integrates inconspicuously into the facade.



**Concealed awning protect**

This model is perfect for integration into plaster facades and can be reached from below for maintenance at any time.





# SMART HOME SYSTEM





DISCOVER  
ONYX.HOME  
AND  
ONYX.PRO

# ONYX

## The smart home system from HELLA

The ONYX.HOME smart home system was specially developed for the operation of sun protection products. Venetian blinds, outdoor blinds, awnings and roller shutters are conveniently controlled by smartphone, tablet or fully automatically. All products are graphically displayed in the free ONYX app and can be visually identified using colors.

The sun protection products can also be controlled by voice control, push buttons, using the ONYX.CLICK hand-held radio transmitter or the ONYX.SWITCH wall-mounted radio transmitter. The HELLA ONYX system can be connected to all common smart home systems and allows the sun to get in only where it is wanted.



### For a smart home

Be smart when playing with the sun! Be it a room flooded with light in winter or a shaded terrace on a hot summer's day – with the ONYX.HOME control system, it has never been easier to guide the daylight and make optimum use of it within your own four walls. Digital, automatic and in real time!



### Control system for offices, etc.

Whether it's an apartment building or a large office complex – ONYX.PRO from HELLA has the energy balance for architecture of any size under control. ONYX.PRO provides a uniform facade appearance and protects the sunshade from the influence of the weather. In coordination with the electrical planner, HELLA takes over the pre-configuration and commissioning of the sun protection systems. More sun protection – less air conditioning!



# The components



## ONYX app

All sun protection products at a glance on your smartphone! With the ONYX app, controlling sun protection is child's play – be it at home or on the go. In addition, various weather and time scenarios and automated programs can be easily created and automatically executed via the ONYX app.



## ONYX.CENTER

The centre box serves as an interface between a smartphone and the individual control devices and communicates via a wireless radio connection. It transmits radio commands bidirectionally so that the exact current position of the sun screen is displayed via the live feedback in the app.



## ONYX.WEATHER

The wind and sun sensor ONYX.WEATHER logs weather influences such as wind speed, sun intensity and temperature on the facade. With the help of the sensor, the control system reacts quickly and adapts automatically to the weather.



## ONYX.CLICK

ONYX.CLICK is the hand-held radio transmitter for the control of sun protection products. It serves as an extension of the centre box ONYX.CENTER, but it can also be operated on its own without the box.



## ONYX.SWITCH

ONYX.SWITCH is the wall-mounted radio transmitter for ONYX control devices. Several devices can be put together and grouped into five channels. The display of a channel is symbolised by a unique color. For each channel, a favourite position can be saved on the ONYX.SWITCH.



## ONYX.TAG wind

This sensor measures the vibrations occurring on the awning when it's windy. If the set threshold value is exceeded, the awning is automatically retracted.



## ONYX.TAG sun


The sun and brightness sensor automatically controls shading systems based on the recorded values and is the ideal glare or heat protection for indoor and outdoor areas.



## ONYX.TAG temperature

The temperature and humidity sensor monitors the temperature indoors and frost outdoors and controls the sun protection according to set values.





*Show me how you build  
and I'll tell you  
who you are.*

Christian Morgenstern  
German writer  
(1871–1914)



**HELLA**

**Brochure | Image**

7590 0016\_EN

04/2024

Subject to technical, typesetting and printing changes and errors.