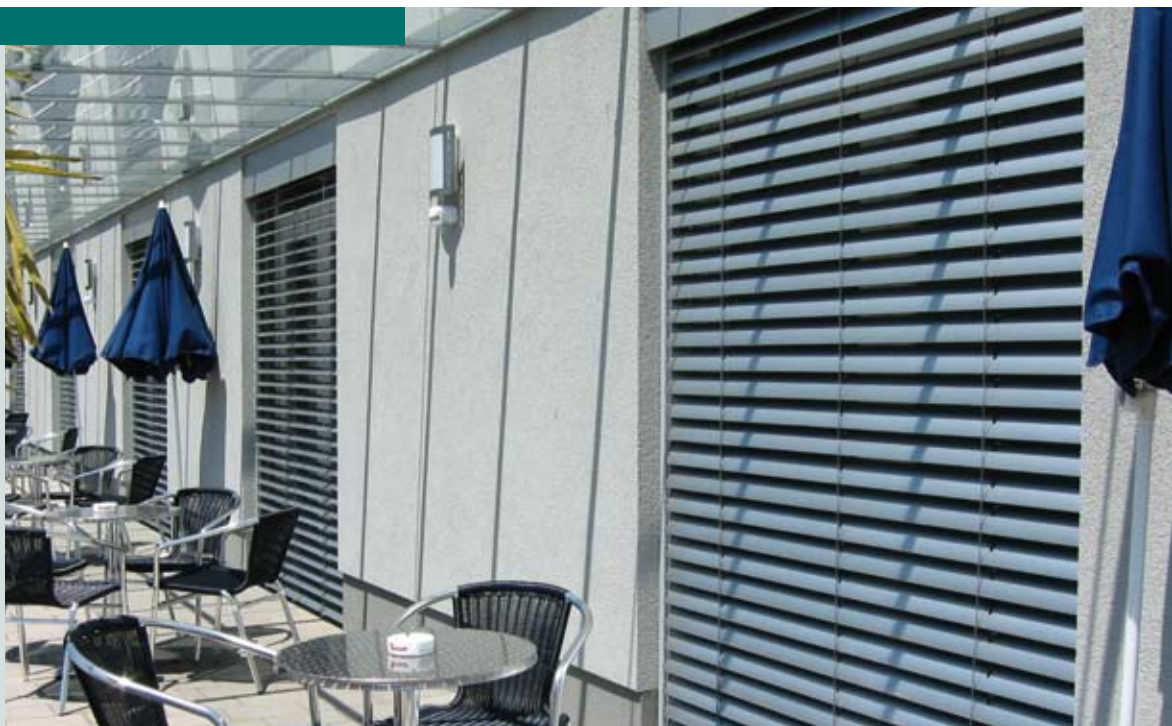


Product Information ARO 65 / ARO 80

- Heat protection due to reflection of the radiated heat already in front of the facade
- Design element for facades due to the attractive design
- Continuous light regulation available
- Operation via crank handle or motor drive



- ARO 65 K:** outdoor blind with 65 mm slats, crank handle drive
- ARO 65 M:** outdoor blind with 65 mm slats, motor drive
- ARO 80 K:** outdoor blind with 80 mm slats, crank handle drive
- ARO 80 M:** outdoor blind with 80 mm slats, motor drive

Design description

Top rail

Made from galvanised, U-shaped profiled cold roll profile, bordered on both edges. Dimension 58x56 mm.

Drive options

a) Crank handle drive

Raising and lowering the blind and repositioning the slats using a crank handle. Maintenance-free bevel gear unit with gear reduction 2:1 or 3:1, entry into the interior of the room via bearing. Crank rod made from aluminium, powder-coated or anodised, with folding handle and crank holder.

b) Motor drive

Raising and lowering the blind and repositioning the slats using an electric motor 230 V/AC. Drive with integrated planetary gear, limit stop at the top and bottom, and thermo-protection switch to prevent overloading the motor.

Ladder cord

Made from high-strength terylene-polyester, shrink-resistant, thermally fixed, lightfast.

Lifting tape

Anti-friction coated lifting tapes for a run with minimum wear and tear and maximum UV-protection. Dimension 6x0.28 mm.

Slats

Slat width 65 or 80 mm, made from specially alloyed aluminium, bordered on both

edges. 2-layer stove enamelled, scratchproof and shock-proof, lightfast. Slat thickness 0.44 mm; optionally available with Omega punching in each 8th slat (standard) or, for a better guidance of the ladder cord, in each slat (surcharge).

Wind protection device

Via guide nipples made from zinc diecasting fixed to the end of the slats, and extruded side guide rail, anodised or powder-coated according to RAL, and with plastic insert for sound insulation.

Optionally via polyamide-sheathed high-grade steel wires \varnothing 2.5 mm, braided flat tape or perlon wire tensioning. Guided through the punchings of all slat ends, tensioned via tensioning bracket made from die-cast aluminium.

Tilting device

Standard: Tilting device without working position with tilting both ways. When lowering the blind, it is closed towards the exterior, smooth tilting process when changing the direction of movement. When raising the blind, it is closed towards the interior.

Optionally available with Variotec operation:

Blind lowers, whereas the slats are opened for approx. 50° (working position). Completely closeable in each

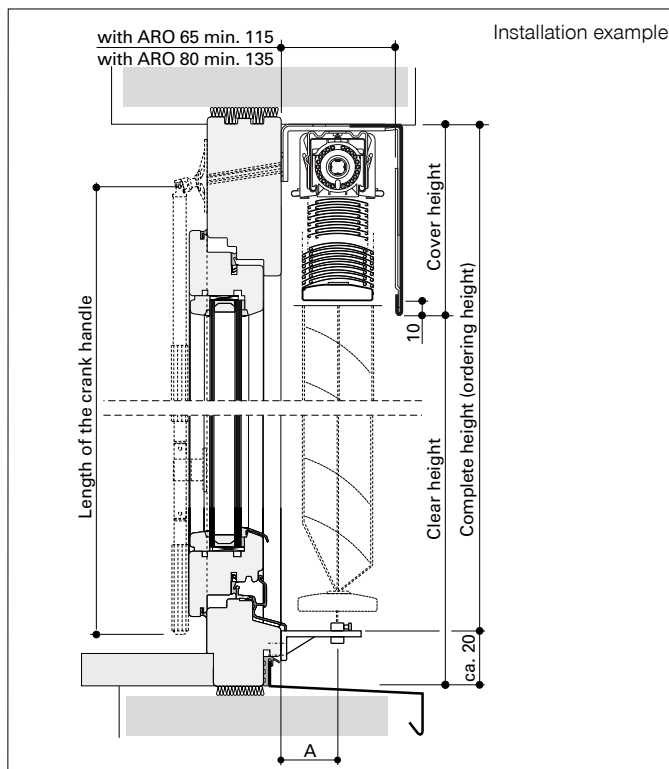


Fig. Omega punching

position. Raising the blind in the horizontal position (with maximum opened slats).

Bottom rail

Made from extruded, closed aluminium profile. Dimension 60x18.6 mm or 80x18.6 mm, powder-coated. Closed with plastic end caps. Bottom rail not tilting.

The stack heights can differ from the values given due to variances in length or height or circumstances caused by the weather. Therefore the stack height should be increased by 5%.

| Maximum dimensions | |
|---------------------------------|----------------------|
| Outdoor blind type ARO 65 K / M | max. width 5,000 mm |
| Outdoor blind type ARO 80 K / M | max. width 5,000 mm |
| For both types | max. height 5,200 mm |
| Max. blind surface ARO 65 K / M | 14 m ² |
| Max. blind surface ARO 80 K / M | 20 m ² |

| | Complete height of the outdoor blinds in mm | | | | | | | |
|--------------|---|------|------|------|------|------|------|------|
| Stack height | 1500 | 2000 | 2500 | 3000 | 3500 | 4000 | 4500 | 5000 |
| ARO 65 | 200 | 235 | 270 | 305 | 345 | 390 | 425 | 460 |
| ARO 80 | 190 | 220 | 255 | 285 | 315 | 345 | 375 | 405 |

Qualified company:

Head Office:
HELLA Sonnen- und Wetterschutztechnik GmbH
 A-9913 Abfaltersbach 125
 T. +43 (0)4846 / 65 55-0
 F. +43 (0)4846 / 65 55-134
 E: office@hella.info

www.hella.info